

Second Class Postage
Paid at Wayne, Nebraska

THE WAYNE HERALD

Published Every Monday
and Thursday at
114 Main, Wayne,
Nebraska 68787

WAYNE, NEBRASKA 68787, MONDAY, DECEMBER 3, 1979
ONE HUNDRED FOURTH YEAR NUMBER TWENTY-NINE

Ingenuity Adds Grain Storage on Area Farm

The ingenuity of the American farmer once again has helped him slave off, at least temporarily, the annual problem of grain storage.

Floyd and Steve Glassmeyer, father and son who live southwest of Wayne, have added to their grain storage capacity by 4,000 bushels.

THE PAIR, who live but a half-mile apart, constructed an emergency grain storage facility on Floyd's farm four miles south and about a mile west of here. The structure is made simply of plywood, bolts, a steel cable and several yards of plastic.

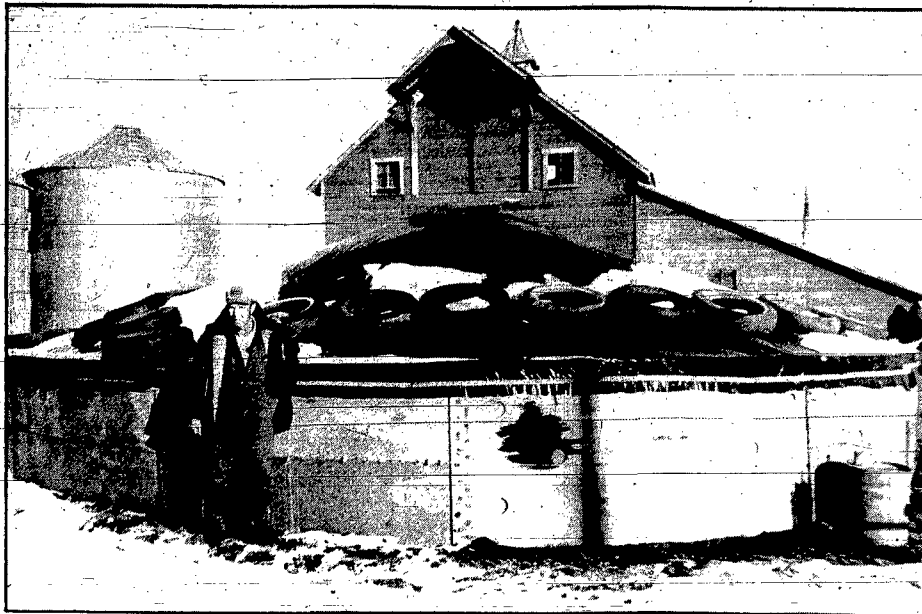
As the Glassmeyers moved closer to the completion of harvest time this fall, they quickly realized a surplus of grain and nowhere to store it. To put it simply, they found themselves with 4,000 more bushels of corn than they had storage space for.

NORMALLY, the grain could be taken to a local elevator for sale or storage. However, with grain moving ever so slowly at the terminals, area grain elevators have little or no room for storage.

So, the Glassmeyers struck upon an idea seen by them in a recent edition of the "Farm Show" magazine—a portable grain bin.

Floyd said they went to town for materials one morning, and by sunset the plywood grain bin was finished. By sunset the next day it was filled and covered.

ALTHOUGH the size can vary depending on how many sheets of plywood are used, Floyd said he and his son used 14 sheets. The result was a perfectly round storage facility



IT WAS AS EASY as one, two, three and about as fast. Floyd (above) and son Steve Glassmeyer recently constructed an emergency and portable grain storage bin on their farm southwest of here. Made from 14 sheets of plywood bolted together, the structure holds 4,000

about 33 feet in diameter.

To insure against moisture, the Glassmeyers lined the inside with dirt and then a three-foot strip of plastic. In addition, as a precautionary measure, a steel cable was placed around the outside of the bin to prevent bulges or broken plywood. Each sheet was double-bolted.

THE COST: about 6 cents per bushel, and it's all reusable," Floyd reminded

bushels and was constructed in about half a day. As with most area farmers, the Glassmeyers have had to improvise for grain storage since major grain terminals are full and local elevators are short on storage space.

By looking at a picture in a magazine, the Glassmeyers were able to avoid a serious storage problem. And, if similar problems arise next year, the portable facility can be enlarged by buying more plywood.

FLOYD, who farms about 300 acres of corn with his son, said the grain was dried down to 14 percent "to make sure it wouldn't spoil or heat up on us."

Normally, he explained, grain is dried to

15 1/2 percent. The grain stored in the temporary structure was dried the extra 1 1/2 percent for good measure, he said.

GLASSMEYER said he and his son plan to sell the corn after the first of the year "depending on the market."

In all, the Glassmeyers now have 30,000 bushels of storage capacity and the knowledge that if more is needed, a quick trip to the lumber yard will suffice.

Area Employment Demand Is High, As Supply Is Low

The number of workers available for employment in the Wayne area is so low that the Norfolk Job Service office is trying to recruit prospective employees.

KEN BOYER, manager of the regional Job Service Office in Norfolk, said demand for jobs continues high while the supply continues to diminish. Potential for improvement in this area is poor, he added.

"Qualified applicants just are not available in the area," he explained. "We're trying to recruit them for Wayne."

STATISTICS compiled by the Norfolk office show there are only 31 persons registered for jobs in the Wayne area. More than 50 percent of these are outside of Wayne County, Boyer said.

Many of those registered are looking for specific types of work such as with a beef packing plant.

IN THE CITY of Wayne, a total of 16 job openings are on file with the Job Service Office. These include a "broad area of openings" such as carpenters, mechanics, maintenance persons, medical and teachers, Boyer explained. But, apparently, there is a poor supply of applicants and the positions are going begging, he noted.

Help wanted ads in The Wayne Herald substantiate the local problem. As far back as August, there were 30 help wanted ads on the classified page. The most recent edition of The Herald, Nov. 29, advertised 11 job positions open.

BOYER ATTRIBUTES the shortage of prospective employees in the area to expansion in the retail and manufacturing sectors. Naturally, as new businesses spring up or as factories expand, more employees are needed. This drains the job market since the number of potential employees moving into the area is not keeping pace with the demand.

"For the area, the job market has been tight for about two years," Boyer said. "And we don't foresee a lot of change, either," he said. There will be a seasonal increase just as there is every year, but that will not make much difference in the overall job market picture, he indicated.

"WE ARE GETTING some job applications through the Rural Employment Service in Wayne," the Job Service manager said. "But most of these are part-time students and the positions we're looking for mostly are permanent."

He added that Mable Tietgen, Chamber of Commerce secretary and manager of the RES, is attempting to find part-time help for the students.

ANOTHER figure supporting the employment situation in the area is the latest unemployment figure for Wayne County. Only 1.6 percent of the work force is unemployed.

"The only thing that could help the situa-

tion is a recession," Boyer explained. That would release additional employees into the job market by layoffs, but eventually the problem of too much idleness results.

THERE DEFINITELY is a shortage of labor in the area, Boyer explained, and last year it was "quite bad."

"What we're trying to do is attempt to get people to move into Wayne" to help relieve the tight job market. "We've had some success at this, but it isn't easy."

Regional vs. Metro
The regional economy, of which Wayne is a part, will come through a recession somewhat better than the national or metropolitan economy because of the region's reliance on less cyclical industries such as food processing, the director of the Bureau of Business Research in the University of Nebraska at Lincoln College of Business Administration said.

DR. DONALD Pursell said unemployment in the regional economy will be well below the national and metropolitan average. For the nation, unemployment will approximate 7 percent, compared to around 4.5 percent for Nebraska in 1980, he said.

This will be up from 1979, but far less than for the nation, he predicted. The strength of the regional economy is related to the increase in agricultural cash receipts, he explained.

CASH RECEIPTS in the ag sector are expected to be up 29 percent during the fourth quarter of this year, compared with year-earlier levels.

This will likely encourage farm equipment and related sales during the balance of 1979. Some of the increase in cash receipts will carry over into the retail sector, where dollar volume demand is expected to hold up well through the balance of the year, he explained.

WEAK SPOTS in the regional economy continue to be centered in the state's urban areas. For example, total retail sales, including motor vehicles, are running six percent above 1978 levels in Omaha. When an inflation rate of 12 percent is entered, real retail sales are down in metro Omaha, he explained.

On the other hand, net taxable retail sales for the second quarter of this year in Wayne County were 18.2 percent above the same period for 1978. The county had retail sales of \$10.9 million for the second quarter of this year as compared to \$9.2 million a year ago.

THE REGIONAL economy is vulnerable to a prolonged recession, he cautioned. If real disposable personal income continues to slide into the second and third quarters of next year, consumers largely will purchase necessities. An extremely long winter, colder than normal and with higher oil prices and declining real personal disposable income, will prevent consumers from purchasing luxury items.

Easement Request Is On Agenda Of Board

A request by the Nebraska Department of Roads for an easement to about one-half acre of highway frontage at the northwest end of the Wayne State College campus is expected to be approved by the Nebraska State College Board of trustees at their 3 p.m. meeting Tuesday in Lincoln.

THE ACTION, if approved, will transfer the Wayne State property to the Department of Roads. The land would then be used for a planned widening of a culvert on Nebraska 15. Work on the project is expected to begin next spring.

"As far as Wayne State's part, it really involves just a transfer from one state agency to another," said John Struve, WSC director of finance. "There is no financial benefit because funds pass from the Department of Roads to the state treasury." The expansion is expected to improve the Northwest entry to WSC.

INFORMATION on the fault and payment rate of student loans at the four state colleges also is expected to be presented to the board Tuesday. The figures are expected to show Wayne State with a 2.83 percent default rate on National Direct Student Loans.

Struve said that figure is probably the lowest loan default rate of the four Nebraska State Colleges and the figure compares favorably with the approximate 15 percent default rate nationally. WSC loans about \$250,000 per year in National Direct Student Loans to students for educational expenses.

THE BOARD of trustees will also hear reports on the status of a pending Nebraska Supreme Court Ruling on whether or not state college faculties may negotiate as separate units or as a system.

Reports from the four college presidents and other committees will also be presented for consideration at the coming meeting.



Mmm, Mmm Good

THAT LOOKS LIKE a mighty big bite for such a small Indian. Little Shelly Fredrickson, however, was anxious to dig in during a hot breakfast of pancakes, sausage and orange juice served Thursday morning at the Carroll Elementary School. The hot meal, served by Mrs. Sharon Olson and Mrs. Ruth Korfine, culminated a month-long project at the Carroll school of nutrition. The food unit, entitled "Learn to Eat—Eat to Learn," involved all kindergarten through fourth grade students who studied the four basic food groups for good nutrition. Other projects during the month included viewing films, reading books, participating in various art projects and a trip to the Ray Loberg dairy farm near Carroll. Students, who also discussed the first Thanksgiving, dressed as Indians and Pilgrims for breakfast Thursday. Shelly, who obviously is dressed as an Indian, is the eight-year-old daughter of Mr. and Mrs. Jerry Fredrickson.

Elderly May Receive Help For Fuel Bills

Applications for having fuel bills paid for the elderly will be discussed Monday when a representative of Goldenrod Hills Community Action Agency visits Wayne.

Betty King, Wayne County Outreach Worker, will be at the Senior Citizens Center from 9 a.m. to 2 p.m. to help elderly fill out applications to see if they qualify for having their fuel bills paid.

Items senior citizens should bring along include a copy of their utility bills and a copy of their direct deposit slip; a copy of their social security check; a copy of their social security income check; a copy of their various pension checks; and other income verification records.

For more information, contact King at 375-1657, or 375-1460. The Senior Citizens Center is in the basement of the City Hall.

Herald To Print Santa Letters

The Wayne Herald again is planning to collect letters to Santa Claus from youngsters in the Wayne area.

Santa, who telephoned from the North Pole last week, said he plans to read each youngster's letter carefully and do the best he can to make everyone happy on Christmas Eve. Because of his hectic schedule, however, Santa said he may have to make some substitutions.

We told Santa we would be happy to collect his mail for him. To make sure he sees all the letters, we will print them in The Herald each week.

Boys and girls are asked to mail their letters to Santa Claus, The Wayne Herald, 114 Main St., Wayne, Neb., 68787.

NPPD Condemnation Payments Top \$82,000

An estimated \$82,000 already has been paid to some 17 landowners and tenants under routine procedures involving Nebraska Public Power District condemnations in Wayne County.

According to information supplied by the Wayne County Court, some \$82,947.60 has been paid by NPPD. This amount represents 80 percent of the award that was determined by court-appointed appraisers.

THE CONDEMNATIONS involve proposed construction of a 345-kilovolt NPPD power line through Northeast Nebraska. The power company is attempting to secure right-of-way for completion of the project. Transmission line tower construction already has begun in Dakota, Stanton and Wayne counties where NPPD has been granted easements.

A SPOKESMAN for the County Court said 15 of the appraisers' awards have been appealed. Seven are appeals by property owners and tenants, while NPPD has filed the other eight. Three appeals have been by tenants after property owners decided the original offer was satisfactory.

According to Nebraska law, the court appoints three appraisers within three days for each condemnation after a condemnation proceeding has been filed. These appraisers survey the property in question and make estimates of anticipated damage. The estimates are presented to the court and either party (plaintiff or defendant) has the right of appeal within 10 days.

BOTH PARTIES must agree before the partial payments are made, however, that the 80 percent is an equitable figure. The

last payment was made Oct. 30. Some payments are made to tenants and some are made to the property owners. That is stipulated by the appraiser.

A jury trial date of Jan. 15 has been set in Wayne County District Court for the first of several cases involving the appeals. District Court Judge Merritt C. Warren Sept. 12 signed the order setting the trial. The first case, expected to be a test case, involves Valerius H. and Bernice M. Damme, Route 1, Wayne, as plaintiffs vs. NPPD.

THE POWER company several months ago began condemnation proceedings against 47 landowners and tenants involving 116 tracts of land.

Ron Bogus, NPPD public information manager, said 59 percent of the cases have been settled voluntarily, while the remaining 41 percent resulted in condemnation proceedings.

TOTAL PROJECT cost initially was estimated at \$3,438,000, but a delay of several months due to the condemnations has inflated that figure somewhat, officials say.

Bogus said an initial completion date for erection of all towers and stringing of all wire is August. However, this date is undergoing review due to a variety of delays.

The appeals were filed by both sides with the feeling that settlements reached in the lower court (County Court) were either too low (as for the property owners) or too high (as for NPPD).

The transmission line will run from Hoskins east to a sub-station near Raun, Iowa.

CHRISTMAS SHOP
22
Shopping days
till Christmas

Record



Award to Livestock Auction

WAYNE LIVESTOCK Auction, Inc., was honored with a Chamber of Commerce Progress Award in recent weeks at a Chamber coffee. The award recognized the new owners, from left: Jerry Dorcey, Gary Kay, Dale Johnson and Stan Baier.

Census Bureau Plans Farm Work Survey

Information about farm work done for pay during the past year and about migratory farm work will be collected by the Bureau of the Census in this area, Leo C. Schilling, director of the Bureau's Regional Office in Denver, has announced. Interviewers will visit a sample of households here during the week of Dec. 10-15, 1979.

The farm work questions are in addition to the ones asked regularly in the monthly survey on employment and unemployment conducted by the Bureau for the U.S. Department of Labor.

Results of this survey provide data on conditions in the labor force, prime indicators of the economic health of the country. For example, in October the survey indicated that of the 103.5 million men and women in the civilian labor force, 97.3 million were employed. The nation's unemployment rate was 6.0 percent, up from 5.8 percent in September but substantially below the recession peak of 8.9 percent reached in the second quarter of 1975.

About 76,000 households across the country take part in the monthly survey.

Police Report

Wayne Police Department reports four traffic accidents recently.

The first was reported about 3:30 p.m. Tuesday in the 200 block of Main St. Drivers involved were Albert D. Damme, 73, Wayne, and Elmer C. Kinsella, 67, Norfolk. Both cars received about \$200 in damage.

The next mishap was reported about 4:12 p.m. Wednesday at the exit road from Wayne-Carroll High School at Sherman Avenue. Drivers were Deborah K. Prenger, 15, Wayne, and Nancy J. Heithold, 17, Wayne. The Prenger four-wheel drive and the Heithold car both received minor damage.

Another accident was reported about 3:25 p.m. Thursday at Sixth and Dearborn Streets. Drivers were Kell R. Jorgensen, 19, Wakefield, and George W. Biermann, 50, Wayne. Both pickups received minor damage.

The other accident was reported about 1:33 p.m. Thursday in the 100 block of Fairgrounds Road. Drivers involved were Burton Schmoltd, 51, Wayne, and Robert Lee Baier, 30, Wakefield. The Baier pickup, owned by Lee Swinney, and the Schmoltd pickup received minor damage.

Patrol Covers Rural Mishap

The Nebraska Highway Patrol reports a one-car accident about 1 a.m. Sunday 7 miles east of Wayne on U.S. 35.

According to the report, a car driven by Gary E. Rahn, 26, Allen, went out of control after Rahn apparently fell asleep at the wheel. The car went into the ditch, striking a fence.

He was not injured and his car received moderate damage.

County Court

FINES

Lori A. Goslar, Charter Oak, Iowa, speeding, \$25; Kenneth G. Hahn, Pierce, improper backing, \$10; Danny B. Watts, Wayne, careless driving, \$25; Gene L. Top, Pilger, operating a motor vehicle with no headlights, \$10; Brenda L. Kroll, Sioux City, \$25; Mark A. Waterbury, Jefferson, S. D., speeding, \$34; Timothy J. Boyle, Wayne, speeding, \$28; Norman C. Brondum, Pender, speeding, \$24; no inspection sticker, \$10; Kirk A. Wacker, Wayne, no valid inspection sticker, \$10, speeding, \$16; Darrell G. Danielson, Wayne, speeding, \$10; David Yonkers, Phillips, speeding, \$25; William D. Milks, Springfield, no valid inspection sticker, \$10; James J. Walker, S. Sioux City, speeding, \$13, no valid registration, \$10; John J. Maslonka, Wayne, speeding, \$25; Steven R. Brummetts, Norfolk, speeding, \$25; Gary D. Fletcher, Omaha, speeding, \$10; Jodi L. Frevert, Wayne, speeding, \$25; Susan K. Terwilliger, Sioux City, speeding,

\$25; Hans Jessen, Homer, speeding, \$19.

SMALL CLAIMS

The following small claim was filed in County Court: Jerry Langston, Wayne, is plaintiff seeking \$125 from Elwood, Ida and Roger Pilger, Wayne, due for damage to bicycle after it was thrown in wet cement.

CRIMINAL

County Judge James Duggan signed the following orders:

Robert L. Lewis, Craig, littering, \$25.

Gary R. Brownell, Allen, consuming alcoholic beverage on public street, \$10.

Reynold Propkop, Pender, theft by exercising control, two days in Wayne County Jail, a pair of overshoes from Pamida, Inc.

Mike Ellis, Wakefield, six months in jail on two charges of insufficient funds checks, \$100 fine and restitution on 11 checks totaling \$172.20, after he pleaded

guilty. Upon his request, he will serve the two sentences in the Nebraska Penal Complex in Lincoln.

Vehicles Registered

1980 — Rodney Deck, Winslow, Olds; William Vahlkamp, Wayne, Chev; Wayne Marsh, Wayne Chev.

1979 — Larry Lindahl, Wayne, Mercury; Dwight Lienemann, Hoskins, Chev; John Struve, Wayne, Ford Van.

1977 — Herman Utecht, Wakefield, Chev.

1974 — Gerhard Wacker, Winslow, Ford.

1975 — Jerry Painter, Hoskins, Chev.



OBITUARIES

Clifford M. Dahl

Clifford M. Dahl, 71, of Loveland, Colo., died there Thursday. Services were scheduled for Saturday, Dec. 1, in Loveland, and again today (Monday) at Sinai Lutheran Church in Sinai, S.D. Burial will be in Sinai.

Dahl was born Feb. 23, 1908 in Sinai, where he attended school. After graduating from high school he served in the U.S. Navy for several years.

He was united in marriage to Luella Rikansrud in 1935 at Long Beach, Calif., where the couple resided until 1946 when they moved to Nebraska. They owned and managed nursing homes in Coleridge and Wayne for many years, selling the Wayne business in 1973 and moving to Colorado.

Dahl was active in the Masonic Lodge, Shrine, Lions Club and numerous other organizations. He served as the third president of the American Health Care Association and was a member of Zion Lutheran Church in Loveland.

He is survived by his wife; one son, Kenneth Dahl of Clear Lake, Iowa; one daughter, Katherine Kahler of Denver, Colo.; and three grandchildren, all of Clear Lake, Iowa.

Memorial contributions may be made to Zion Lutheran Memorial Fund, Loveland, Colo.

This Week at

Wayne State

WEEKDAYS

Ulmer and Johnson Senior Art Exhibit, 8 a.m. - 5 p.m., Nordstrand Visual Arts Gallery, Fine Arts Building, through Dec. 8, free to the public.

Ticket Sales for Dec. 13-16 Elizabethan dinners, 8 a.m.-5 p.m., Room 109, Fine Arts Building, public invited.

MONDAY, DEC. 3

Phi Sigma Epsilon Fraternity meeting, 8:30-9:30 a.m., Senate Room, Student Center, open to fraternity members.

Residence hall staff meeting, 2-4 p.m., Birch Room, Student Center.

Information referral staff meeting, 3-4 p.m., Senate Room, Student Center.

Self defense class, 6:30-8:30 p.m., Senate Room, Student Center, open to registrants.

Yoga Club, 8-10 p.m., Birch Room, Student Center, public invited.

Young Republicans meeting, 9-10 p.m., Menagerie, Student Center, public invited.

TUESDAY, DEC. 4

Chamber of Commerce meeting, 10:30 a.m. - 1 p.m., North Dining Room, Student Center, open to Chamber members.

Self defense class, 2:30 p.m., Senate Room, Student Center, open to registrants.

Residence hall staff meeting, 3:30-5 p.m., Menagerie, Student Center.

Student Recital, 5:15 p.m., Ramsey Theatre, Fine Arts Building, free to the public.

Fellowship of Christian Athletes, 7 p.m., Wildcat Room, Rice, open to students.

Program council meeting, 7-8 p.m., Menagerie, Student Center.

Women's Basketball against Hastings College, 7 p.m., Rice Auditorium, tickets at the door, \$2 adults and \$1 non-WSC students.

Concert Band and Jazz-Rock Ensemble Concert, 8 p.m., Ramsey Theatre, Fine Arts Building, free.

WEDNESDAY, DEC. 5

Student Judicial board meeting, 4:30-6 p.m., Senate Room, Student Center, board members.

Wrestling against Nebraska Wesleyan, 7 p.m., Rice Auditorium, free to the public.

Stress Management Workshop, 7-9 p.m., Senate Room, Student Center, open to registrants.

Gamma Delta honorary meeting, 7-8 p.m., Grace Lutheran Church, Wayne, open to members.

Planetarium show "Star of Christmas," 7:30 p.m., Dale Planetarium, Carhart Science Building, no admission, public is invited.

Student activities board film "Straight Time," 7:30-9:30 p.m., Ramsey Theatre, Fine Arts Building, free with WSC ID card.

Honor recital, 8 p.m., Ramsey Theatre, Fine Arts Building, free to the public.

Campus ministry discussion, 8 p.m., Campus Ministry House, public invited.

Campus Ministry Vespers, 9:45 p.m., Campus Ministry House, public invited.

Swimming meet against Mankato State, at Mankato, Minn.

THURSDAY, DEC. 6

Self defense class, 2:30 p.m., Senate Room, Student Center, open to registrants.

Data Processing meeting, 3 p.m., 3rd Floor Assembly Hall, Hahn Administration Building, college personnel.

Chi Alpha Honorary meeting, 7-10 p.m., Menagerie, Student Center, open to students.

Christmas tree lighting, 7-9 p.m., Willow Bowl, free refreshments following, public invited.

Education Service Unit meeting, 8:30 a.m. - 4 p.m., Birch Room, Student Center.

Tau Kappa Epsilon Fraternity meeting, 9-10 p.m., Senate Room, Student Center, open to members.

FRIDAY, DEC. 7

Stress Management workshop, 2-4 p.m., Senate Room, Student Center, open to registrants.

Phi Mu Sorority meeting, 7:30 - 8:30 p.m., Birch Room, Student Center, open to members.

Wrestling against Central Oklahoma, there.

Men's basketball against Missouri Western, at St. Joseph, Mo.

Women's basketball against South Dakota State, there.

SATURDAY, DEC. 8

Graduate Record Examinations (GRE), 8 a.m. to 5:30 p.m., Senate Room, Student Center, open to registrants.

American College Testing (ACT), 8 a.m. - 12:30 p.m., North dining Room, Student Center, open to registrants.

Wayne High School wrestling invitational, all day, Rice Auditorium, tickets at the door, \$2 adults and \$1 non-WSC students, public invited.

Swimming meet against Dordt College, 1 p.m., Carlson Natatorium, Rice, free, public invited.

Alpha Pi Omega Honorary — Pledge and Initiation, 7-10 p.m., Ramsey Theatre, Fine Arts Building, open to members.

Wrestling against Central Oklahoma, there.

BE READY FOR WINTER!!

GAS LINE ANTI-FREEZE & DRYER

3/\$1.00
Regular 59¢

SHERRY BROS.

FARM & HOME CENTER
Phone 375-2082

GET CRAFTY AT

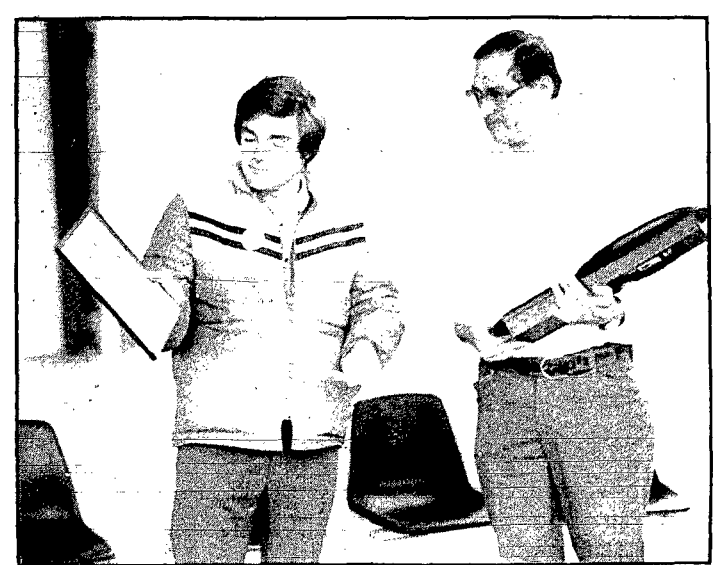
PAMIDA DISCOUNT CENTER
LAST HWY. 25 - WAYNE, NE.

CUDDLE-ME KITS by Douglas Co.

- Pre-cut plush animal kits
- Includes clean, soft polyester stuffing
- "Child-safe" embroidered eyes and noses
- Four exciting styles to choose from

Now: \$3.97
Reg. \$5.47

EFFECTIVE THRU DEC. 5



Valley Engine Is Honored

GARY PICK and Valley Engine Inc. were honored at Friday's Chamber of Commerce coffee. John Dorcey (left), president-elect of the Chamber, presented Pick with a Progress Award. John Nigh, president of Wayne Industries Inc., also presented Pick with a clock on behalf of the industrial group. Valley Engine is located in the Industrial Park in the former Emphasis, Inc. building which was purchased and remodeled by Pick recently.

GREAT NEWS!

We Have MONEY AVAILABLE for:

- WINTER VACATIONS
- AUTOMOBILES
- CHRISTMAS
- REMODELING PROJECTS
- CONSOLIDATIONS

... or Any Worthwhile Purpose.

MONEY for any of your needs up to \$7,000

Fast - Friendly - Confidential

The Triangle

109 West 2nd - Wayne - Ph. 375-1132

Editorial

Cropland Acres Unlimited?

Nebraska Farm Bureau Federation
By M.M. Van Kirk
Director of Information

Is American going to run short of productive cropland and water resources as suddenly as it has of low-cost energy resources? In the last 10 years, the United States has changed from an energy supply situation of abundance to one of dependence on high priced foreign sources and has become subject to international blackmail because of that dependence. What farmer or trucker in 1969 paying less than 20 cents per gallon for diesel fuel would have thought that in 1979 he would be paying in the \$1 per gallon range for the same thing?

For the past 20 years, Americans have talked much about land use planning and soil and water conservation while engaging in farming practices and land utilization which often have been wasteful of both. A USDA briefing paper on the subject of "land use" offered a guess on the year 2000 as to whether there will be enough cropland as follows: "Yes, we will have enough cropland if we assume a low rate of domestic population growth and moderate rates of growth in income and farm exports; maybe not, however, if we assume high income, high population and high exports."

Some cropland trends in the U.S. are encouraging — to a point. The amount of land classified as cropland has declined only slightly over the last several decades. In 1950, there were 409 million acres of cropland. Twenty-four years later there were 382 million acres of cropland. Other land use also remained relatively stable between 1950 and 1974, the exception is land devoted to urban uses, which climbed from 19 million acres in 1950 to 35 million in 1974, an increase of nearly 100 percent.

USDA figures indicate the U.S. loses 2.7 million crop acres per year — 500,000 to urbanization and development of public facilities and 2.2 million to less labor-intensive uses. While about 2.7 million acres are lost, about 1.3 million acres are added annually to the nation's cropland base through expanded irrigation, drainage, land clearing and development of dryland farming. This leaves a net yearly loss of about 1.4 million acres.

For a single year, that may seem insignificant but in 20 years it can amount to 28 million acres and in 100 years to 140 million acres. At the same time, the nation's population continues to grow. Since World War II the U.S. population has grown from 130 million around 230 million, and continues

to climb. Of worse portent is the world's population trend with some predictions that world population may double by the year 2000, with most of the growth occurring in countries already hungry and dependent on food for the U.S. and a few other exporting countries.

Some progress in land conservation is being made. Forty-four states have enacted laws permitting "farmland use values assessment" to help control urban development and restrict "urban sprawl." Zoning of land so it may be used only for specific purposes is becoming more realistic and effective. Soil maps, with soil types classified and pinpointed, are available for a third of the counties in the nation, with most of these covering areas likely to undergo urbanization. There is much more attention given to flood hazard studies, preservation of wetlands, and protection of prime agricultural land from industrial and residential development.

But so far there continues to be reluctance at both the state and local levels to apply land use and water conservation control measures necessary to make the best use of crop, range and timbered lands. Because such measures provoke political and personal controversy, the inclination is to postpone remedies until resources are depleted and crises develop and then complain, "Why didn't someone tell us these things?" Land use planning and conservation and the nation's agricultural future deserve a better fate than that.

Time to be alert
There are signs that some interests wishing to make a "fast buck" are promoting the idea of producing grain alcohol fuel in "on the farm" stills and are compiling lists of farmers to be contacted with promotional mailings.

For example, early in November a farm publication received a letter addressed to "Farm Related Interests" on the subject:

Who's who, what's what?

1. **WHAT** is the total value of items to be given away by the 53 various merchants in Wayne for this Christmas' "Winter Wonderland of Values?"

2. **WHAT** was the new proposal the City Council of Wayne voted on Tuesday night?

3. **WHO** will represent Wayne at the XIII Winter Olympics in Lake Placid, N.Y. in 1980?

4. **WHEN** was the Wayne United Methodist Church's annual Christmas Fun Fair held?

5. **WHO** were the three area residents recently attending a regional meeting of the March of Dimes?

6. **WHAT** are the five times a person should get in touch with a social security office?

ANSWERS: 1. \$8,195. 2. A proposed 1 cent city sales tax for Wayne. 3. Julie Brinkman a former Wayne State College student. 4. Saturday, Dec. 1. 5. Mrs. Betty Carr of Allen, Jeff Jaeggi of Wayne State College and Cheryl Koch of Concord. 6. Before obtaining the first job, when someone becomes disabled, at retirement age, after a death in the family, to get the answers to any question about social security.

"Gasohol Production by Farmers." Note that gasohol was spelled with an "a" in place of the usual "o".

The letter was from an Illinois firm on a mimeographed letterhead and was signed by an individual without identification as to his credentials, qualifications or position with the firm. The letter stated:

"I am pleased to announce that () Inc. has been formed to provide chemicals and technical assistance to farmers and other interested in producing alcohol from grain.

"Please send me your mailing list of names and addresses of farmers or subscribers by Nov. 30, 1979. We will then keep you advised on cost, technical developments and materials in the future."

The crude approach of the letter would indicate persons involved are not very well informed about many things, one being that legitimate publications and organizations do not send our subscriber or member names for someone to compile into a "sucker list". It is an old game that has been around a long time but right now is based on the current popularity of the gasohol concept. Farmers have been victimized for years by outfits selling alleged miracle fertilizer discoveries, soil conditioners, etc., despite warnings that they were of little or no value.

Specialists at the University of Nebraska Agricultural Engineering Department have recently noted that on-farm alcohol production facilities have become available commercially and that it is critical that farmers considering purchase of them know what they are buying and visit an existing installation and observe the operation. They advised purchasers of such equipment to be sure they can work the operation and thoroughly understand it. They also recommend they have a competent engineer evaluate the plans for the equipment before making an investment in it.

Cost estimates made by manufacturing firms indicate that commercial alcohol plants may cost \$30,000 for a plant that distills 20 gallons of alcohol per hour and up to \$70,000 for a fully automated plant.

Knowledgeable people are warning that gasohol that is being marketed and that is performing satisfactorily is an anhydrous (water free) alcohol gasoline mix and is not to be compared with alcohol produced in a relatively simple backyard still. In too many cases, there has been a tendency to lead farmers and consumers in general, to believe that grain alcohol production is very simple and uncomplicated and is a ready-made answer to the farm fuel supply problem.

During World War II, a wheat farmer in Northwest Nebraska built his own oil refinery and made his own tractor fuel during the fuel-short period. Only catch in that story for anyone who sought to emulate him is that he was a true mechanical genius who built his own self-propelled combines and a 4-wheel drive tractor before such equipment was even on the market.

This is not to depreciate gasohol or its potential in the nation's overall energy program. But it is intended to alert farmers that they can expect to get mailings and approaches from individuals and firms seeking to sell them information and materials purported to be helpful to them in producing their own grain alcohol fuel. It would pay them to respond to such contacts with caution and honest doubt.

by dan field



the pied typer

How goes the saying? People don't appreciate something until they don't have it. Such is the case with cable television here.

Viewers have taken the luxury for granted since it was installed here. But now that the reception is poor in some areas and some subscribers have lost their signal all together, the shoe is on the other foot.

From the day we moved in, what we heard of cable television locally was not in the best light. One developer here said his company was so frustrated with the service, or lack of such, and that cooperation was so poor that his company no longer installed the service in each new home.

Up and down the street, comments about cable television were mostly negative. Those that had good service and good reception, of course, haven't been heard from. But residents in the southeast part of town finally got fed up.

A spokesman for a large group of subscribers complained to the City Council last week about their continued poor reception. Because the Council granted the local franchise (for 25 years), then there is some obligation on the city's part to see that the service is adequate.

Attorneys for the city said the city's hands were tied as far as individual problems, but suggested a group of subscribers band together and file a small claims suit for service paid for but not received. Good idea.

Such a legal action certainly would get the attention of the king pins in Hayes, Kan. Although we're sure Hayes is well aware of their problems here, sometimes out-of-sight, out-of-mind can be the case. In view of the scores and scores of complaints, plaintiffs in a court action probably would be successful in generating improved service.

Another ace in the hole is held by the Council. It has final authority on any rate increase request by the cable television firm. With the addition of two new stations, a rate increase has to be forthcoming to help offset the additional expenses here.

We said before, and still believe, that the variety of stations provided by cable TV is a darn sight better than what is offered on the three networks. At least now, television viewers have an alternative to such thrillers as reruns of Hogan's Heroes. Leave it to Beaver, Eight is Enough, Family, and scads of other sticky-sweet programs.

We had cable in Red Oak, and never did we experience any outages or poor reception. We thoroughly enjoyed cable there, but have been hesitant to subscribe here because of the problems we've mentioned.

The potential for cable TV expansion here is enormous. Two, and possibly three, subdivisions are planned this summer. That adds considerable potential for the cable firm, but if service continues poor, if public relations with the local office do not improve and if the home office in Kansas does not show more interest in its product here, the Council should mix any rate increases.

Unfortunately, cablevision here is like so many other products today. Someone is overly eager to sell a product or service, but once it comes time to maintain what has been sold, good service is hard to find.

Jimmy C., the President, should listen to his mother. Asked recently how she would deal with what's his name in Iran, she said she'd get a million dollars and have him killed.

While that is a rather strong approach to the problem, her philosophy has some merit. What she is saying is 'get in there, throw some weight around, let them know with whom they are dealing.'

There are many who feel President Carter should have taken firm and decisive action long ago. And don't think the CIA hasn't considered ridding this world of Khomeini. I'm not one for assassinations, but his demise certainly is something to consider.

The one-cent sales tax option could become a barn burner here in the next few months. The facts are yet to be presented in their entirety, and we urge voters to approach the proposal with open minds.

Already, there are businessmen and residents convinced that a local sales tax will force business out of town. Let's wait until the story is told before jumping to conclusions.

Omaha and Lincoln have local sales taxes, while suburbs of both do not. Has the Westroads suffered, or Treasure City in Lincoln? Hardly.

Wayne, while some with more closed minds think otherwise, is facing a serious financial pinch next year. The options are simple and are limited.

Either a sales tax or a cutback in services. Cut back services, you say? That's fine, but when it comes to your organization or affects your children's recreation, don't blame the city.

OUT OF OLD NEBRASKA

On Sept. 21, 1905, Nebraska statesman William Jennings Bryan and his family left their Lincoln home of Fairview for a year-long world tour. The Bryans visited the Far East, including Japan, China, and Korea; Egypt, Syria, Turkey and other countries of the eastern Mediterranean; and Europe.

Throughout the trip Bryan continued his political interests and remained in the public eye. Upon his return to the United States in the summer of 1906, a gigantic reception was given by prominent Democrats in Madison Square Garden.

Nebraska politicians such as Omaha Mayor James C. Dahlin mingled with Bryan supporters from all over the country to welcome Bryan home. The Sept. 6, 1906, "Valentine Democrat," on file at the Nebraska State Historical Society, reprinted from the "Omaha World Herald" the following description of the reception:

"Such a welcome as seldom in this country's history has been accorded a private citizen was given William Jennings Bryan at Madison Square Garden tonight in the celebration of his return from a year of foreign travel. As the guest of the Commercial Travelers' Anti-Trust League, Bryan was greeted by more than 20,000 persons, who filled the great gallery. The streets and avenues outside the garden were choked for blocks by other thousands who stood patiently for hours for the privilege of even a fleeting glance at the distinguished visitor.

The interior of the garden was a waving sea of color. Every person in the audience had been provided with an American flag and every cheer from 20,000 throats was accentuated by the waving of 20,000 flags bearing the stars and stripes.

"When Mr. Bryan entered the hall the proceedings which had already begun were brought to a temporary pause while for eight minutes volley after volley of thousands of cheers rolled through the great building. When Chairman Tom L. Johnson in his introduction of Mr. Bryan referred to the guest of the evening as 'the first citizen, if not the first official of the land — not yet the first official,' and Mr. Bryan rose, the great gathering broke out in unrestrained cheering, while the band played 'Hail to the Chief.' (Bryan was mentioned by many in the crowd as a possible presidential candidate in 1908. He eventually accepted a third nomination for the presidency and was defeated.)

"So touched was Mr. Bryan by the welcome that as he stood waiting for the cheer to subside his eyes filled with tears and he strode nervously from side to side. 'How can I thank you for this welcome home?' he said. 'My heart would be ungrateful if it did not consecrate itself to your service. It was kind to prepare this reception. It was kind of Governor (Joseph W.) Folk to come here all the way from Missouri. It was kind of Tom Johnson, that example of the moral courage we so much need in this country, to tender his presence here. It was kind in you to recompense me fully in being absent so long from my native land. I thank you, I return to the land of my birth, more proud of my citizenship than ever before.'

"The doors of Madison Square Garden were opened at 5:30 o'clock and by that time hundreds of ticket holders were clamoring for admittance. Police lines had been formed for three blocks from all entrances. In this way the early comers were well handled. The immense auditorium with its tiers of balconies and galleries rising to the great glass roof began to fill up so quickly that the ushers and policemen had difficulty in adhering to the seating arrangements. It was a gay spirited, big natured audience which had a cheer for everyone. There were calls and counter-calls from the various state conventions.

"The 'Nebraska Bryan's Home Folks' arrived in a body and were given seats just

back of the speaker's stand, at the Twenty-seventh street side of the garden. The hall was devoid of decorations, other than the bunting and flags placed about the temporary stage.

"Before the meeting was called to order a band played merrily. Such tunes as 'Maryland,' 'My Old Kentucky Home,' 'Way Down Upon the Swane River,' and other melodies of the south, caused tumultuous applause. But when the first strains of 'Dixie' were sounded the Bryan welcomers were on their feet in an instant and the cheers completely drowned the band. As each notable Democrat entered the hall and was recognized, his name was called, and the cheering was renewed.

"Twelve thousand persons, may of them women, were seated at 7 o'clock and an hour later not a vacant seat was to be seen. The heat in the garden, once the crowd had assembled, was so great that a large portion of the glass roof was pushed back, leaving the stars as a canopy. The galleries early were jammed to their utmost capacity. Hundreds of policemen and fifty firemen were on duty in the giant structure.

"At 8 o'clock when Mr. Bryan had not yet arrived, Harry W. Walker, on behalf of the Commercial Travelers' Anti-Trust League, called the assemblage to order. Gov. Folk was given an ovation and it was several minutes before he could speak. When he finally secured silence he asked his hearers to be as quiet as possible, otherwise none of the speakers, not even Mr. Bryan himself, could be heard. The mention of Mr. Bryan's name called forth renewed cheering." — Pat Gaster, Editorial Assistant Nebraska State Historical Society.

Weekly gleanings. . .

News of Note
around Northeast Nebraska

JONI Phillips of Stanton is one of four art majors at Kearney State College who will be featured in a senior art show Dec. 2-7 on campus. Joni, the daughter of Mr. and Mrs. Gene Phillips of Stanton, plans a career in art education.

ROBERT A. Anderson, president of Lutheran Hospitals and Homes Society of America, has announced the transfer of Pender Community Hospital Administrator Gary Hermanson, to Central Peninsula General Hospital at Soldotna, Alaska. Hermanson, 38, has served the Pender hospital as administrator for the past three years.

THE Wakefield Fire Department answered a call Nov. 27 to the Terry Potter farm to extinguish a fire in a dryer bin. Fire Chief Short Kay reported only minor damage to the bin.

WISNER has been fortunate during the past year and a half to gain several new doctors to care for the medical needs of the community. The first to come was a Doctor of Dentistry, and more recently, Doctors of Medicine. This week Wisner has gained another doctor, Darrell D. Thorp, Doctor of Chiropractic. Dr. Thorp and his family arrived from Omaha, where he has been in practice with two other doctors.

WILLIAM C. Schilling, son of Mr. and Mrs. Glenn Schilling of Bancroft, was recently awarded the Alpha Gamma Rho Fraternity National Undergraduate Achievement Award. The honor recognizes him as the fraternity's most outstanding member on the national level.



WRITE A LETTER TO THE EDITOR

KEOGH PLAN or IRA!

Can they really save you income taxes?

Self-employed or employee?


Save tax dollars

Use Tax-Deferred Dollars to build your IRA or Keogh Retirement Account.

ACT NOW! You have a choice.

- **Keogh Plans**
Self-employed individuals can set aside 15% of earned income for retirement (up to a maximum of \$7,500 annually) and receive a tax deduction for amount contributed.
- **IRA (Individual Retirement Account)**
Anyone not covered by a qualified retirement plan can establish an IRA and contribute up to 15% of current income on a tax-deduction basis (maximum \$1,500 each year).


FOR A FREE 30 MINUTE INTERVIEW CONTACT:
George Phelps, CFP
416 Main
Wayne, NE
Ph. 375-1848



Investors Diversified Services
We help people manage money.

THE WAYNE HERALD

Serving Northeast Nebraska's Great Farming Area



PRIZE WINNING NEWSPAPER 1979

114 Main Street Wayne, Nebraska 68787 Phone 375-2690

Established in 1875; a newspaper published semi-weekly, Monday and Thursday (except holidays), by Wayne Herald Publishing Company, Inc., J. Alan Cramer, President; entered in the post office at Wayne, Nebraska 68787, 2nd class postage paid at Wayne, Nebraska 68787.

NATIONAL NEWSPAPER
NNA SUSTAINING MEMBER — 1975

Dan Field
Editor

Jim Marsh
Business Manager

Official Newspaper of the City of Wayne, the County of Wayne and the State of Nebraska

PUBLICATION NUMBER — USPS 670-560

SUBSCRIPTION RATES
In Wayne, Pierce, Cedar, Dixon, Thurston, Cumming, Stanton and Madison Counties: \$9.79 per year, \$7.58 for six months, \$5.86 for three months. Outside counties mentioned: \$11.25 per year, \$9.00 for six months, \$7.75 for three months. Single copies 15 cents.



Speaking of People

November Newlyweds Are Honeymooning in Hawaii

Flowers in pink, dusty rose and burgundy decorated the altar of the Redeemer Lutheran Church in Wayne Nov. 24 for a 7 p.m. candlelight ceremony uniting in marriage Jeanie Hurlbert and Doug Sturm.

Parents of the couple are Mr. and Mrs. Les Luff and Mr. and Mrs. James Sturm, all of Wayne. The newlyweds took a wedding trip to Hawaii and Anaheim, Calif., and will make their home at 719 Walnut Dr., Wayne.

The bride, a 1973 graduate of Wayne-Carroll High School, is employed at the State National Bank and Trust Co., Wayne. The bridegroom also was graduated from Wayne-Carroll High School in 1973. He attended the University of Nebraska and Lincoln Barber School and is employed at Ellis Barbers in Wayne.

The couple's double ring ceremony was performed by the Rev. S.K. deFreese of Wayne. Wedding music included "Just The Way You Are" and "The Wedding Prayer" sung by Mrs. Peg Luff and Mrs. Georgia Addison. Organist was Mrs. Marilyn Wallin of Wayne.

The bride, who was escorted down the aisle by her father, appeared in an ivory floor-length gown of polyester chiffon. The bodice featured a transparent yoke with a wedding band neckline trimmed in lace. Matching lace trimmed the cuffs of the long sleeves. A wide ruffle, accented with lace and ribbon, edged the softly gathered skirt. The bride wore baby's breath in her hair.

Mrs. Joni Holdorf of Winside served her sister as matron of honor. Bridesmaids were Lori Sturm of Wayne, sister of the bridegroom, and Kristy Peterson, also of Wayne.

Mrs. Holdorf wore a pink Quilana fashion in floor length,



MR. AND MRS. DOUG STURM

fashioned by Mrs. Pat Luff. Bridesmaids wore identical fashions in dusty rose. They all wore burgundy velvet boleros trimmed in lace and carried a single silk rose with streamers.

Flower girl was Alyson Fudge of Ashland and ring bearer was the bride's son, Jeremy Hurlbert of Wayne. Candles were lighted by the bride's brothers, Terry Luff of Wayne and Randy Luff of Hoskins.

Best man was the bridegroom's brother, Jim Sturm of Scottsdale, Ariz., and groomsmen were John Carollo of Wayne and Dennis Paul of Cedar Rapids. The bridegroom was attired in an ivory tuxedo and his attendants wore burgundy tuxedos.

Guests, registered by Mrs. Mary Sturm of Scottsdale, Ariz., were ushered into the church by Terry Luff and Scott Ehlers, both

of Wayne, Randy Luff of Hoskins and Bill Reece of Wahoo.

For her daughter's wedding, Mrs. Luff selected an ivory polyester gown. The bridegroom's mother chose a beige fashion.

Nearly 150 guests attended a reception in the church basement following the ceremony. Hosts were Mr. and Mrs. Jack Luff of Winside and Mr. and Mrs. Greg Johnson of Lincoln. Lorree Dangberg of Wayne was at the gift table.

Mrs. Mary Ann Luff of Hoskins cut and served the cake. Mrs. Myla McEthos of South Sioux City and Mrs. Helen Johnson of Lincoln poured, and Mrs. Deb Jensen of Wayne served punch.

Waitresses were the bride's nieces, Shannon Holdorf, Holly Holdorf, Robin Luff and Karl Luff.

Announcements

MONDAY, DECEMBER 3

Senior Citizens Center bingo, 1:30 p.m.
American Legion Auxiliary, Vet's Club, 8 p.m.

TUESDAY, DECEMBER 4

Royal Neighbors of America potluck dinner and Christmas party, Thelma Young, 12:30 p.m.
Central Social Circle potluck dinner, Mildred Gramlich, 1 p.m.
Senior Citizens Center bowling, Melodee Lanes, 1:30 p.m.
Senior Citizens Center current event session, 2 p.m.
Villa Wayne Tenants Club weekly meeting, 2 p.m.
Wayne County Right to Life, Joe Riekens, 7 p.m.
Wayne Newcomers Club, Black Knight, 7 p.m.
FNC Club, Mary Echtenkamp, 7:30 p.m.

WEDNESDAY, DECEMBER 5

Villa Wayne Bible study, 10 a.m.
Immanuel Lutheran Ladies Aid Christmas luncheon, 12:30 p.m.
Sunshine Home Extension Club dessert luncheon, Mrs. Chris Tietgen, 1 p.m.
St. Paul's Lutheran Churchwomen Christmas potluck luncheon, 1 p.m.
United Presbyterian Women Christmas tea, 2 p.m.
Tops Club, West Elementary School, 7 p.m.

THURSDAY, DECEMBER 6

Senior Citizens Center painting class, 9:30 a.m.
Senior Citizens Center knitting, crocheting and tatting classes, 1 p.m.
Logan Homemakers Club, Mrs. Ben Hollman, 2 p.m.
Hillside Club Christmas party, Mrs. Harvey Reeg, 2 p.m.
Senior Citizens Center band entertains at Wayne Care Centre, 2 p.m.
Senior Citizens Center beginners and advanced bridge classes, 3 p.m.

FRIDAY, DECEMBER 7

BC Club, Jeff's Cafe, 1:30 p.m.
Sunshine Home Extension Club Christmas dinner, Black Knight, 6:30 p.m.

SATURDAY, DECEMBER 8

Just Us Gals Club family Christmas supper, Windmill, 7 p.m.

SUNDAY, DECEMBER 9

We Few Home Extension Club Christmas party, Dennis Luff, Luff, 6 p.m.

MONDAY, DECEMBER 10

Minerva Club Christmas luncheon, Villa Wayne, 1 p.m.
Senior Citizens Center bingo, 1:30 p.m.
Senior Citizens Center Bible study, 2:30 p.m.
Logan Homemakers Club Christmas supper, Black Knight, 6:30 p.m.
Eastern Star, 8 p.m.
VFW Auxiliary, Vet's Club, 8 p.m.

Wayne High German Students Decorate Museum for Christmas

German Club students at Wayne High school, under the guidance of German teacher Inga Atkins, gathered at the Wayne County Historical Museum last week to decorate a tree and the entire museum in the Bavarian theme.

The tree features ornaments made by the students and is lighted with candles. Other authentic Christmas decorations include greenery spiraling up the open stairway and around the doors and arches, and colorful candles and candleholders on

the mantel of the fireplace in the music room.

Mrs. Lucille Larson, a member of the Historical Society, said large mirrors above the three fireplaces in the museum reflect the various ornaments in each room. Greenery has been used as backgrounds to colorful ornaments and multiple candle arrangements located throughout the museum.

The public is invited to view the Christmas decorations at the museum throughout the month of December. The museum is open

each Sunday afternoon from 2 to 4. Group tours can be arranged by contacting Mrs. Clifford Johnson, curator, at 375-1137.

German Club members will return to the museum Tuesday evening Dec. 4, at 7:30 p.m. to entertain members of the Historical Society and other guests at a party featuring German carols and other German music.

In addition to the music, the vestibule fireplace will be aglow to roast marshmallows.

Persons attending the party who have German Christmas articles they would like to share are asked to contact Inga Atkins for instructions.

Refreshments of German holiday punch and traditional German cookies will be served from the dining room table decorated with a holiday wreath. On the refreshment committee are Mrs. Allen Shufelt, Mrs. Leon Meyer, Mrs. Richard Baier, Mrs. Walter Moller, Mrs. Jim Hein, Mrs. Willard Wittse, Mrs. Wayne Gilliland, Mrs. Howard Witt and Lucille Larson.

General chairman for the event is Mrs. Clifford Johnson.

READ AND USE
WAYNE HERALD
WANT ADS

Christmas Tree at Senior Citizens Center Fashioned of Jewelry

Several women in the craft class at the Wayne Senior Citizens Center recently completed a Christmas tree made of used jewelry.

Working on the tree, which is on display at the Senior Citizens Center, were Mrs. Harry Wert, Mrs. Gladys Petersen, Mrs. August Dorman and Shirley Wagner. Genevieve Craig donated the purple velvet frame.

There were 26 at the Senior Citizens Center for Bible study Nov. 26 conducted by the Rev. Larry Ostercamp of Wayne.

Pastor Ostercamp reviewed Genesis 29, 30 and 31 Mrs. August Dorman furnished refreshments.

Next Bible study of Genesis 32 will be at 2:30 p.m. on Monday, Dec. 10. Persons attending are asked to bring their favorite translation of the Bible.

Senior citizens who bowled at Melodee Lanes in Wayne Nov. 27 were Otto Baier, Herman Luellen, Clarence May, John

Dall, Floyd Sullivan and Carl Mellick.

Luellen rolled the high game, 190. High series for the advanced bowlers, 533, was rolled by Dall. Beginning bowler Clarence May rolled a high game of 125 and a series of 355.

Bowling is sponsored by the Senior Citizens Center every Tuesday afternoon at 1:30. All area residents 55 years of age and older are invited to participate.

HIGH SCHOOL JUNIORS

Immediate job opportunities in the medical field.

Medical Records Clerk — Part time, after school.

Nurses Aide — 3 to 9 shift and weekends.

Apply for both at the Wayne Care Centre.

Gay Theatre

ENDS TUESDAY, DEC. 4
At 7:30 p.m. Except
Fri-Sat-Tue 7:20 & 9:15 p.m.
Matinee 2 p.m. Sunday

More Entertaining
Than Humanly Possible!

THE NIGHT OF THE LIVING DEAD

Children Listed Wrong in Story

A story in The Wayne Herald Thursday incorrectly listed the names of Mr. and Mrs. Floyd Glassmeyer's children, who hosted a gathering in Wayne Nov. 25 honoring their parents' 35th wedding anniversary.

Glassmeyers' children are Steve and Diane Glassmeyer and family of Wayne, Glen and Carolyn Osborn and family of Madison, and Pamela Glassmeyer of Onawa, Iowa.

Chapter President Represents Nebraska Teachers of German

Mrs. Edith Zahniser of Wayne, president of the Nebraska chapter of the American Association of Teachers of German, recently attended the 1979 joint annual meeting of ACTFL-AATG-SCOLT.

Theme for the conference, held Nov. 22-24 in Atlanta, Ga., was "Unity in Diversity."

The meeting covered a range of workshops, lectures and panels on a variety of topics, including "Freud and the Magic of Kafka's Writing," "Language and the Community: Teaching Foreign Language in the Continuing Education Classroom," "A Discussion of the New Copyright Law" and others.

During the conference Mrs. Zahniser also attended the AATG Chapter Presidents' Assembly, where she represented the teachers of German in Nebraska.

Joanie Designs

Invites You To See Their
Many "Unique Gift Items."

— Freshly Cut —
Nebraska
CHRISTMAS TREES **CHRISTMAS WREATHS**

Pick Yours Out Now
We Have Many Different Sizes to Choose From.

15% OFF

On Christmas Wreaths
Nov. 29 to Dec. 5

Decorated or Undecorated

Decorate Your Home With Holiday Florals by Joanie Designs

Joanie Designs

— HOURS —
Sunday — 2:00 - 5:00
Wed. & Sat. — 1:00 - 5:30
Thursday & Friday
1:00 to 9:00

Located at Country Nursery
3 1/2 Miles East & 1/4 Mile North of Wayne on Hwy 35.
Ph. 375-1809

Chicken's Back

Lil' Duffer Now Has
"FLAVOR CRISP"
CHICKEN

For Snappy Service Call Ahead
375-1900

Lil' Duffer
7th and Main - Ph. 375-1900

Christmas Shop Your Hometown Merchants...

Buy more, with the money
you save on gas.

It just makes sense to shop where it's most convenient... with your hometown merchants.

A selection of merchandise has never been better. And if there is a gift return due to size or color it's easier locally.

So, this year shop your hometown first. It helps keep businesses here for your shopping pleasure the rest of the year too.

CHRISTMAS SHOP

Wayne

© 1979 A.C.I.

**The State National Bank
and Trust Company**
Wayne, NB 68787 • 402/375-1130 • Member FDIC
Main Bank 122 Main • Drive-In Bank 10th & Main

PAMIDA

EAST HWY. 35
WAYNE, NE.

DISCOUNT CENTER

Church DAY

**SHOP PAMIDA
TUESDAY,
DECEMBER 4
PAMIDA TURNS
ITS HEART TO
HELP THOSE
WHO HAVE
HELPED SO MANY!**

10%

**OF YOUR
PURCHASE
TO
BE DONATED BY
PAMIDA TO THE
CHURCH OR
CHARITY OF
YOUR CHOICE**

**JUST WRITE YOUR
NAME AND THE
NAME OF YOUR
CHURCH OR
CHARITY ON THE
BACK OF YOUR
SALES RECEIPT
AND DROP IT IN
THE SPECIAL
RECEPTACLE AT
THE CHECKSTAND**



—Speaking of People

Mrs. Ramsey

Hosts LaPorte

Mrs. Arlene Rabe was a guest at LaPorte Club, held Nov. 20 in the Kenneth Ramsey home. Mrs. Harry Wert will entertain the club at a 12:30 p.m. potluck dinner Dec. 18.

Club 15 Plans

Gift Exchange

In Lutt Home

Members of Club 15 will exchange \$2 Christmas gifts when they meet Dec. 19 at 1:30 p.m. in the home of Mrs. Roger Lutt. Mrs. Louis Lutt Jr. will be in charge of the entertainment.

Mrs. Louis Lutt Jr. entertained the club Wednesday afternoon. Twelve members responded to roll call with a homemade Christmas craft. Mrs. Fred Janke showed members how to make felt Christmas bells.

The club plans to remember a resident of the Wayne Care Centre with a Christmas gift.

Mrs. Dennis Baier, Mrs. Morris Backstrom, Mrs. Fred Janke and Mrs. Gilbert Baier received their birthday gifts. Club members voted to spend \$2.50 to \$3 for birthday gifts for secret sisters.



November Honorees

IT WAS PARTY TIME at The Wayne Care Centre recently when residents gathered to honor seven fellow residents for their November birthdays. Seated at the birthday table, from left, are Amanda Nicholson, 80, Anna Meier, 73, Cecelia Joelus, 79, Bill Swanson, 86, Maude Auker, 101, Nelda Belknap, 73, and Marinus Jorgensen, 79. Mrs. Auker and Mrs. Joelus both observed their birthdays Thanksgiving Day. All of the honorees and guests were treated to birthday cake and coffee during the celebration.

Public Invited To Sing With Community Choir

The Wayne Community Choir is rehearsing for a Christmas concert to be given later this month.

All area residents who would like to participate are invited to sing with the choir during practices each Tuesday evening at 7:30 p.m. at the First United Methodist Church in Wayne.

The date for the concert will be announced later, according to choir member Cindy Nigh.

Right to Life Meeting Tuesday

Joe Riekens will be hosts Tuesday evening, Dec. 4, for the Wayne County Right to Life chapter. Meeting time is 7 p.m. Persons attending the meeting will hear a tape by Dr. Paul Marx, a doctor of sociology, entitled "The Reality of Abortion."

Villa Tenants Meet During November

Bible studies each Wednesday morning at Villa Wayne during the month of November have been conducted by the Rev. Thomas McDermott on Nov. 7, the Rev. John Jorde on Nov. 14, and the Rev. Doniver Peterson on Nov. 28.

Residents of Villa Wayne met for cards on Nov. 6 and Nov. 13. Hostesses both days were Edna Cramer, Mabel Haberer and Jessie Phillips.

Twenty Villa residents and 12 guests attended a potluck supper in the Villa community room on Nov. 16.

The group observed the birthdays of Elsie Echtenkamp, Ruth Anderson, Henrietta Frost, Max Schneider and Leona Kluge. A rummage sale was held at the Villa Nov. 20 with 26 attending. Hostesses during the day were Leona Kluge, Mabel Haberer and Minnie Heikes.

Two Win Prizes

Peg Gormley and Rose Schulz received card prizes at JE Club, held Tuesday afternoon in the home of Mildred West.

Next meeting will be a 11:30 a.m. luncheon at the Black Knight in Wayne on Dec. 11. There will be a gift exchange.



ALLEN
Monday, Dec. 3: Chicken fried steak, mashed potatoes and gravy, buttered carrots, peaches, bread and butter.
Tuesday, Dec. 4: Spaghetti, meatballs, creamed green beans, pears, bread sticks.
Wednesday, Dec. 5: Steak on bun, creamed potatoes, applesauce, gingerbread with whipped topping.
Thursday, Dec. 6: Snow on the mountain, carrot and celery sticks, half banana, bread and butter.
Friday, Dec. 7: Tuna and noodles, tossed salad, peas, half apple, peanut butter cookie, bread and butter, or chef's salad with crackers, half apple, peanut butter cookie.
Milk served with each meal

WAKEFIELD
Monday, Dec. 3: Tuna and noodles, green beans, carrots and celery, gelatin cake, bun.
Tuesday, Dec. 4: Sliced ham and cheese sandwiches, baked beans, potato wedge, half orange.
Wednesday, Dec. 5: Fried chicken, potatoes and gravy, corn, gelatin-riced salad, cookie, bun.
Thursday, Dec. 6: Hot dogs, French fries, pineapple, Rice Krispie bar.
Friday, Dec. 7: Swiss steak, potatoes, cabbage salad, chocolate chip bar, bun.
Milk served with each meal

WAYNE-CARROLL
Monday, Dec. 3: Beef patty on bun, buttered carrots, orange juice, peaches, cookie, or chef's salad, orange juice, cookie, roll.
Tuesday, Dec. 4: Taco, gelatin with fruit, cake, roll, or chef's salad, gelatin, cake, roll.
Wednesday, Dec. 5: Wiener on bun, tomato macaroni, carrot strip, pears, cookie, or chef's salad, carrot, pears, cookie, roll.
Thursday, Dec. 6: Pork patty on bun, rice, buttered corn, cabbage salad, apple crisp, or chef's salad, carrot strip, apple crisp, roll.
Friday, Dec. 7: Pizza, green beans, applesauce, chocolate chip bar, or chef's salad, applesauce, bar, roll.
Milk served with each meal

WINSIDE
Monday, Dec. 3: Taverns and pickles, later gems, buttered corn, frosted, graham's, or choice of chef salad or cottage cheese with fruit.
Tuesday, Dec. 4: Chili dogs, potatoes, buttered green beans, vanilla pudding, or choice of chef's salad or cottage cheese with fruit.
Wednesday, Dec. 5: Hot roast beef sandwich, whipped potatoes and gravy, carrot and celery sticks, gelatin, no salads.
Thursday, Dec. 6: Beef stew, whipped potatoes, dark rolls, butter and peanut butter, cake and straw, berries, or choice of chef's salad or cottage cheese with fruit.
Friday, Dec. 7: Submarine sandwich, French fries, peas and carrots, apple bars, no salads.
Milk served with each meal



The estimated annual daily per capita tea consumption in England is 2,000 cups - almost six cups a day.

Introducing



Deb Greve

Deb is originally from Wakefield and recently graduated from the Norfolk Beauty College. She is now operating Jane's Beauty Shop on a full time basis. Deb is well qualified to handle your individual hair needs. Give her a call at 375-1666!

APPOINTMENTS FOR:
Mondays and Wednesdays thru Saturdays
8:30 to 5:00
Thursdays (Beginning Dec. 13) 8:30 a.m. to 9:00 p.m.
CLOSED ON TUESDAYS

Jane's Beauty Shop

Woehler Trailer Court in Wayne Ph. 375-1666

MONEY SAVING TIP: To avoid snagging and possible damage to your clothing when washing, close zippers, fasten hooks and eyes, and turn the garment inside out.

Hillcrest Care Center

Intermediate care with professional services:

- A. Special diets
- B. Social Services
- C. Activities
- D. Chapel
- E. Protestant & Catholic church services
- F. Beauty & Barber shop
- G. Physical therapy
- H. Whirlpools daily if ordered
- I. Air Conditioning in each room if desired
- J. Telephone hook-ups available in each room
- K. Fire Sprinkler system
- L. Whirlpools and Physical therapy on an out-patient basis.



"Where Caring is our Business"

Member N.H.C.A. 703 Oak Street Marcia Haisch, Adm.
A.H.C.A. Laurel, NE Phone: 256-3961

Sports

Ten Lettermen Back

Blue Devils Are Deep And Tall



WAYNE SENIORS are pictured here with their basketball coaches as they prepare for their home opener Thursday against Blair. Front row, from left: Stu Nissen, Jeff Zeiss, Scott Wessel, Steve Sorenson. Back row, from left: assistant coach Ron Carnes, Jeff Dion, Paul Sutherland, Tony Rezek, Randy Dunklau, coach Bill Sharpe.

With 10 returning lettermen including eight seniors, the Wayne Blue Devils have depth on their side this season. Of the 15 players, listed on the boys basketball varsity roster, 12 are at least six feet tall.

The shortest player on the team, 5-6 Jeff Zeiss, should be one of the most valuable players on the team. The senior guard started every game for the Devils last season and was the leading ball handler and passer.

The tallest returning letterman is 6-5 junior Perry Nelson. As a sophomore, Nelson started most of the season until he was sidelined with a case of pneumonia. Tony Rezek, a 6-4 transfer from Omaha, was a late season starter. Jeff Dion and Randy Dunklau also started many games for the Devils.

Adding depth to this year's squad are lettermen Stuart Nissen, Tod Heier, Scott Wessel, Steve Sorenson and Paul Sutherland. All five saw considerable action and most were spot starters.

"We do consider depth one of our assets. We have a lot of players who are very equal. Some will emerge stronger as the season progresses," said head coach Bill Sharpe. "We will try to fast break when we can and press when we can. We do have some size and if our tall players can

play regularly we may change that style."

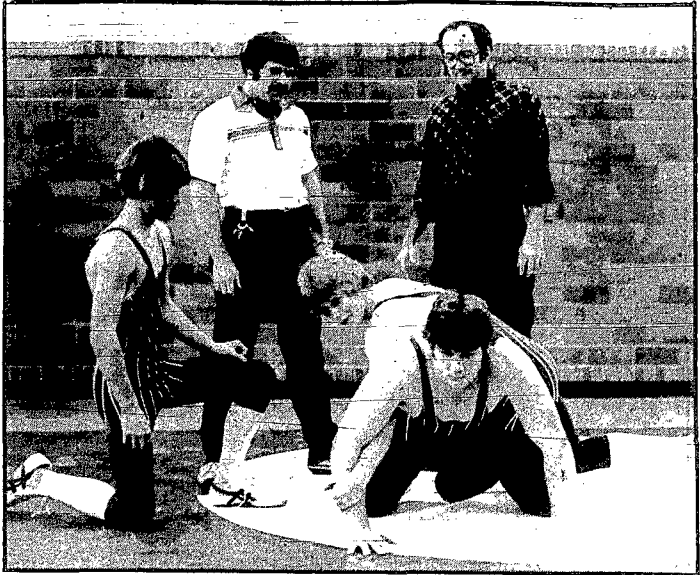
Non-lettermen who will be trying to break into a starting spot are juniors Jere Morris, Todd Skokan, Tim Pfeiffer, Kevin Nissen and 6-6 transfer Mike Sladek.

Sharpe pointed out that Morris is "looking real good in practice and added that Stu Nissen, Sorenson and Dunklau have looked good in practice and will see lots of action.

The Blue Devils, hoping to improve on last season's 11-9 record, will open their season at home against Blair, Friday, Dec. 7 and are scheduled to host South Sioux City a week later. Sharpe said that those teams will probably be two of the toughest on the schedule.

"Blair is an excellent big team and South Sioux will be tough. With tough openers, we must rush things to try to get organized," said the eighth year coach. "It would be nice if we could win both for even split."

Some of the younger players on Wayne's team gained valuable experience playing in summer league basketball this past summer. According to Sharpe, the league helps keep the players exposed to the sport and gives the coaches a chance to see the athletes play under game situations. Assisting Sharpe this season will be Ron Carnes.



RICK JOHNSON slips a cross body ride on Dan Mitchell as Dave Doescher watches. Coach Don Koenig and assistant coach Stew Cline stand in the background. All three wrestlers are senior lettermen.

Two State Medal Winners Will Lead Wayne Grapplers

With two returning state qualifiers, eight lettermen and a large crew of freshmen, the Wayne wrestling team hopes to build a winning team. Leading the Blue Devils are Rick Johnson and Dan Mitchell, both seniors who won medals in the Class B State wrestling tournament last season.

Mitchell, a heavyweight, finished his junior year with a 21-4 record and a fifth place medal at the state tourney Johnson, who wrestled in the 145 pound class, also placed fifth at state and compiled a 21-8 record. He will probably wrestle at 155 this season. Coach Don Koenig plans to

have his wrestlers in good condition and is emphasizing conditioning during practice. Joining Koenig will be assistant coach Stew Cline and Clayton Hoels, a Wayne State College student who will be helping out.

Senior Dave Doescher, juniors Brett Frevert and Mike Schock and freshman Jon Jacobmeier are expected to help out the team considerably. Jacobmeier is one of eight freshmen on the team.

"We have quite a few lettermen back and that helps. We should be physically tough," said Coach Koenig. "Schock is the strongest wrestler on the team pound for pound, Jacobmeier is a dedicated

freshman who has wrestled for quite awhile and we have the best crop of freshmen ever."

Other Wayne wrestlers who should be seeing varsity action are: Steve Pospishal, Mike Luft, Kevin Echtenkamp, Nick Sieler, Aaron Schuett and Eric Brink. Composing the remainder of the team and fighting for varsity positions will be: Rocci Schulz, John Carhart, Terry Gilliland, Richard Roland, Kurt Janke, Danny Watts, David Wiener, Chad Dorcay, Gerald Monk and Alan Schuett.

Wayne opens its season Thursday in a dual at Schuyler. The Devils will be at home Dec. 10.

Eagles Will Utilize Experience This Year



RETURNING ALLEN senior lettermen are: front row from left — Lee Hansen, Bob Stewart, Greg Carr, Duane Stolle; back row — coach Bart Kneiff, Steve Stewart, Doug Koester. Not pictured is Mark Koch.

Seven of the nine returning lettermen on the Allen boys basketball team are seniors and four started some time during the 1978-79 season, giving the Eagles experience this year.

Second year coach Bart Kneiff hopes that experience will help offset the lack of height on his team. He and assistant coach Gene Lauritzen are hoping to improve on last year's 6-10 record.

Bob Stewart, Lee Hansen, Greg Carr and Steve Stewart, all seniors who started at one time or another last season, will form the nucleus for the squad. Other lettermen are Doug Koester, Duane Stolle, Mark Koch, Frank Lanser and Terry Brewer. Lanser and Brewer are juniors. Joining the returning lettermen is sophomore Robb Linafelter, who steps up from the junior varsity team.

"We don't have a lot of size, we're smaller than Ponca but we're taller than we were last year," said coach Kneiff. "We don't have bad depth. With the number of returning lettermen, we have a lot of experience on the bench. Lanser and Linafelter both moved up from the JV team last year. They had a winning

record and some other good players should move up."

Kneiff said that his team will have "no walkaways" and predicted that Ponca, Homer, Bancroft and Wakefield will probably be some of the stronger teams on the schedule.

"Last year we were disciplined. We still need to be disciplined but we need to open up more. We will still run basic basketball, we won't be running and gunning," Kneiff stated. "We would love to break 500 and realistically it is very possible."

WE PAY THE HIGHEST RATE OFFERED BY ANY BANK OR SAVINGS & LOAN ON MONEY MARKET CERTIFICATES

EFFECTIVE NOVEMBER 29TH THRU DECEMBER 5TH

11.022%

\$10,000 Minimum — 6 Month Maturity

+ Federal Regulations Require a Substantial Penalty for Early Withdrawal and Prohibit the Compounding of Interest during the Term of the Deposit.

FIRST NATIONAL BANK OF WAYNE

Main Bank: 301 Main St. 375-2525
Drive-In Bank: 7th & Main 375-3002

Member F.D.I.C.

The price is right

...right now!

Early-order discounts now in effect! Buy now — store in our warehouse or yours. Get big savings on all your "Stor-Age" and drying needs. Major steel corporations have increased their prices recently which will be reflected in future prices. Call Nutrition Plus for big savings that are yours by buying now!

...you can't make a better choice than mfg "Stor-Age" — ask a "Stor-Age" owner

Call Merle Sieler
Phone 375-4111

INTEGRATION PLUS INC.

East Hwy 35 Wayne, NE

Meet Wayne HS Athletes, Coaches Tomorrow Night

Wayne sports fans and students will soon be able to see a preview of what to expect during the winter sports season. The Wayne-Carroll booster club is sponsoring a get-acquainted night at 7:30 p.m., tomorrow (Tuesday) in the Wayne High School gym.

Coaches Curt Frye, Bill Sharpe and Don Koenig will introduce members of their respective teams to fans and students and demonstrate various drills. Mike Mallette, WHS teacher and a basketball official, will discuss basketball rules and their application for the audience. Also on hand will be a guest speaker who will discuss wrestling.

Coffee, soft drinks and snacks will be served following the program. Everyone is invited by the Wayne-Carroll booster club. Frye is girls' basketball coach, Sharpe is boys' basketball coach and Koenig coaches the wrestling team.

Bowling Highlights

- Women 180 Games — Brenda Wittig, 191; Linda Janke, 223; Tami Granquist, 194; Judy Carlson, 183; Frances Leonard, 201; Carol Lackas, 198; Joann Proett, 197; Diane Wurdinger, 189; Esther Hansen, 189; Sue Wood, 188; Wilma Fork, 185; Theresa Sievers, 182; Alice Rohde, 180; Sally Watson, 180; Jessie Harmer, 180; Judi Topp, 201; Fran Nichols, 208; Linda Gamble, 181; Joanne Baler, 184; Pat Biermann, 201; Jo Ostrander, 182; 183; 190; Sue Wood, 203; Elia Lutz, 185; Joni Holdorf, 180; Deb Erdmann, 180; Mardella Bebee, 183; Patti Trube, 192; Barb Barner, 185; 199; Ad Klenast, 182; Kyle Rose, 206; 185.
- Women 480 Series — Brenda Wittig, 493; Tami Granquist, 532; Linda Janke, 510; Judy Sorenson, 495; Cathy Echtenkamp, 492; Judy Carlson, 545; Judy Topp, 545; Fran Nichols, 533; Linda Gamble, 483; Karen Hansen, 480; Tootie Lowe, 493; Jo Ostrander, 555; Sue Wood, 407; Elia Lutz, 424; Geri Marks, 506; Patti Trube, 510; Barb Barner, 524; Bev Madsen, 484; Ad Klenast, 522; Kyle Rose, 527; Carol Lackas, 524; Sue Wood, 538; Diane Wurdinger, 520; Frances Leonard, 501; Virginia Rethwisch, 498; Sally Watson, 492; Vicky Skokan, 481; Ad Klenast, 481; Cindy Van Auler, 481.
- Mens 200 Games — John Dall, 202; 210; Dale Thompson, 215; Russ Beckman, 215; Wilmer Deck, 203; Frank Wood, 202; Ron Milliken, 201; Dan Jaeger, 219; 211; Ric Barner, 214; Mike Nissen, 204; Warren Austin, 205.
- Mens 570 Series — Warren Austin, 511; John Dall, 600; Dale Thompson, 572; Dan Jaeger, 620; Ric Barner, 573.

Competitive Laurel Bears Will Be Quick



RETURNING LETTERMEN for the Laurel Bears are pictured here with coach Joel Parks (center standing). At left is injured Clark Maxon. Kneeling is Paul Guern and at right is Lon Swanson.

with only three lettermen returning from last year's team, competition is becoming fierce for the open positions on the Laurel boys basketball squad.

Lon Swanson, Paul Guern and Clark Maxon are the three returning lettermen and shared one starting spot last season. The other four starters from that team are graduated. Maxon will miss two or three weeks of action due to a broken leg he suffered during football season.

The Bears don't possess much height this season. Maxon is 6-4. Swanson is 6-2 and Guern is 5-9. Steve Stark at 6-1 and Blake Maxon at 6-0 will join Matt Johnson and Joe Olsen as regular players who will see considerable action for the Bears.

"Our strong point is that we have a lot of competition for the positions. We have a lot of people who are able to play," said Joel Parks, entering his ninth season as Laurel's head coach. "I like lots of competition. It develops a team concept."

Parks said that his team will move at a quicker tempo and play more people than last year's team but says that they will miss some of players who have graduated from last season's 12-8

squad. "We're looking forward to a fun year. We'll get back to doing the things I like to do," Parks stated. "It'll be interesting to see how we come along."

Wildcat Swimmers Rely On Freshmen

Wayne State College opened its 1979-80 swimming season Saturday at Mankato State, Mankato, Minn., with the Wildcats relying heavily on a group of five freshmen to help them improve on last year's 5-6 dual record. Head swimming coach Ralph Barclay is confident the swim team will be improved because of the newcomers.

"We have some good freshmen that will make us better this year," he said.

The freshmen are: Brad Carpenter and Chad Kerns from Scottsbluff; Eric Glassmeyer, Hastings; Mike Lee, Lincoln and Mark Miller, South Sioux City. Three returning veterans will also be important factors in the Wildcats' season. Marty Christensen, Fremont, was a consistent point winner last year

in middle distance events, the freestyle and backstroke. Roger Lebbert, Omaha, and Dan Guinan from Missouri Valley, Iowa, are leaders in their respective events — freestyle sprints and the breaststroke and butterfly.

John Frick, a top diver last year for the Cats, is scholastically ineligible first semester but should return after Christmas break giving the Cats better depth in diving events. Until Frick returns Tony Scudder, also a Wildcat football player, will be relied on in the diving events.

The Cats have a demanding schedule this year with dual match-ups against swimming powers Northern Colorado, the University of Wyoming and USD-Vermillion.

Coach Frye Optimistic

Girls Hope To Fastbreak



Wayne High School girls' basketball coach Curt Frye is a firm believer in frequent substitution and thinks his philosophy will help the Blue Devils this season.

"We will probably play a lot of people and wear down our opponents this season," Frye said. "Hopefully, we'll be able to fastbreak."

Returning from last year's squad which compiled a 13-4 record are eight lettermen, including two starters. Seniors Shelly Davis, Jolene Bennett, Megan Owens, Stacy Jacobsmeier, Julia Dorcay and Jean Koll and Juniors Lynn Surber and Jenni DeTurk are the returning lettermen. Dorcay and Bennett are the two returning starters.

Making up the rest of the roster for the fourth year coach are 26 other juniors, sophomores and freshmen. Bennett (5-10), Koll (5-11) and Lisa Peters (5-10) will supply the needed height for the Devils.

"I'm optimistic, I think we'll have a good year. It'll be tough to beat last year," said Frye. "Our defense remains to be seen but we'd like to run a man-to-man if we can do it effectively."

The Wayne girls will open their season Thursday, Dec. 6 when they host Madison in the high school gym. Varsity action is scheduled at 8 p.m. and will be preceded by freshman and reserve games.

COACH CURT Frye is pictured here with the six seniors on his basketball team. Front row, left to right: Stacy Jacobsmeier, Shelly Davis, Center row, from left: Jean Koll, Coach Frye, Julia Dorcay. Back row from left: Jolene Bennett, Megan Owens.

Watch For:

- ★ Allen Girls B ball
- ★ Wakefield Wrestling
- ★ Wakefield Girls B ball
- ★ Laurel Girls B ball

Wakefield Trojans Will Depend On Defense And Rebounding

The roster of the Wakefield boys basketball team is lined up with six returning lettermen.

Three of those lettermen have a combined scoring average of 38.5 points per game.

Leading the Trojans offensive will be Scott Hallstrom, who supplied last year's scoring

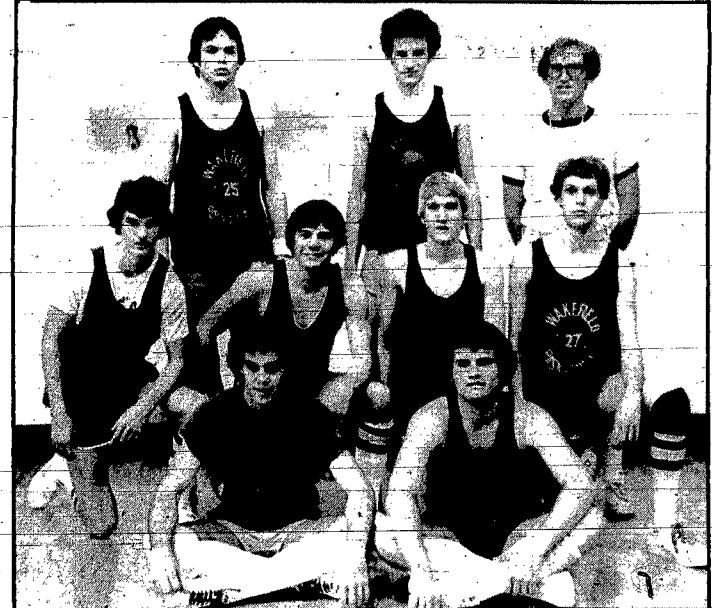
punch with an average of 19.2 points per game. Senior team-mates Tom Preston and Barry Jones averaged 11.1 and 8.2 points per game last season. In addition, Preston was the assist leader with an average of 4.3 assists in each game. Hallstrom, Preston and Rick Guy will carry much of Wakefield's weight in the rebounding department as well.

"We're not very big so we will depend on our rebounding and defense," said first year coach Ernie Kovar. He is taking over coaching duties for Joe Coble, who is now principal at Wakefield. Kovar coached boys basketball during the 1970-71 but was drafted and spent two years in the army. He returned as reserve coach for six years until stepping into the varsity position this season.

Other lettermen joining Hallstrom, Jones, Preston and Guy are Jeff Hallstrom and Brent Kahl. Both are juniors. Loren Erlandson and Larry Soderberg are the other seniors on the squad.

"If our rebounding and defense are successful, we could be pretty good," Kovar said. "Our top eight players will help us early and a couple of others could come on later."

The Trojans, coming off a 9-9 season, will use a controlled break offense this year according to Kovar but must cut down on errors. He said that his team will try to fast break if it doesn't throw the ball away. Assistant coach this season is Rob Nissen.



RETURNING LETTERMEN at Wakefield High School are: front row from left — Scott Hallstrom, Rick Guy; middle row: Brent Kahl, Larry Soderberg, Tom Preston, Loren Erlandson; back row: Jeff Hallstrom, Barry Jones, coach Ernie Kovar.

WSC Lands 11 Football Players on CSIC All-Conference Team

Wayne State College placed 11 football players on the 1979 Central States Intercollegiate Conference All-Conference Team. The selections were made by CSIC coaches.

room and everywhere else," he said.

Scudder, Galesburg, Ill., sophomore defensive tackle Ron Berrie, Davenport, Iowa; and junior offensive tackle Bill Milks, Springfield.

Named to the first team were Steve Ataman, Schaumburg, Ill., and Steve Zelinsky, Wheaton, Ill. Ataman, a junior defensive back has been a leader in the Wildcat secondary for two seasons. This year the junior recorded 69 total tackles, six batted passes, a quarterback sack and a pass interception. Offensive lineman Zelinsky is a sophomore and a two-year starter. The 6-3, 220-pound tackle is one of the most dedicated Wildcat players according to head coach Del Stoltenberg.

Second team selections included two-time NAIA All-American fullback Bob Barry, Battle Creek, Mich. Barry, WSC's all-time rushing and total offense leader, gained 3588 yards on the ground in four seasons. Two other Wildcat seniors, Kevin Savio, Seatonville, Ill., and Tim Hurley, Omaha, also were named to the second team. Savio a center and Hurley, a defensive end, were also selected to the first team of the NAIA All-District II Team.

Six players received honorable mention recognition. They were: senior fullback Bud Matthews, Spring Valley, Ill.; sophomore wingback Pat Maxwell, Tekamah; sophomore defensive end Bill Schwartz, Wayne; sophomore linebacker Tony

There probably wasn't anybody that worked any harder than Steve has all year not only on the field but in the weight

BOWLING at *Melodee Lanes* Phone 375-3390
1221 Lincoln

Home Of **Frigidaire & Maytag Appliances**
WE SERVICE WHAT WE SELL
KUGLER ELECTRIC
Russ Tiedike, Owner

Shrader - Allen Hatchery
HYLINE CHICKS & GOOCH FEED
Phone 375-1420
'Good Eggs To Know'

JEFF'S CAFE
FOR YOUR Dining Enjoyment
Morning, Noon or Night

The Wayne Herald
FOR ALL YOUR PRINTING NEEDS

Junior League		Grace Mixed Doubles	
WON	LOST	WON	LOST
Pin Droppers 20 10	20 10	Weander-Middendorf 25 16	25 16
Pin Crackers 16 12	16 12	Krause-Kulik 28 20	28 20
Pin Pounders 14 10	14 10	Metteer-Marks 28 22	28 22
Pin Rakers 14 10	14 10	Triggs-Hofeldt-Gehner-Koch 28 22	28 22
Strikers 14 14	14 14	Tenne-Waters 24 22	24 22
Hi Rollers 14 14	14 14	Erleben-Stockdale 24 24	24 24
J Musketeer's 13 15	13 15	Boeiler-Gulick 21 27	21 27
Coach Guys 12 16	12 16	Austin-Ekberg 19 29	19 29
Streakin Strikers 9 19	9 19	Wittig-Marr 18 30	18 30
Alley Cats 6 20	6 20	Nelson-Nichols 15 33	15 33
High Series: John Carhart, 192; John Carhart, 443; Strikers, 404; Strikers, 1711; Bill Vrliska, 442; Kevin Maly, 398; Bill Vrliska, 183; Kevin Maly, 176		High Series: Warren Austin, 205; Brenda Wiffo, 191; Warren Austin, 515; Brenda Wiffo, 493; Weander-Middendorf, 169; Weander-Middendorf, 1875	
City League		Go Go Ladies	
WON	LOST	WON	LOST
Red Carr Impl. 39 13	39 13	Pin Pals 42 10	42 10
Black Knight 38 14	38 14	Pin Splinters 38 14	38 14
Wayne Vets Club 35 17	35 17	Road Runners 31 1/2 20 1/2	31 1/2 20 1/2
Wayne Greenhouse 31 21	31 21	Rolling Pins 31 21	31 21
Logan Valley Impl. 30 22	30 22	Newcomers 31 21	31 21
Woods Pigg & Htg. 27 25	27 25	Lucky Strikers 27 1/2 24 1/2	27 1/2 24 1/2
Wayne's Body Shop 25 27	25 27	Up and Downs 26 26	26 26
Ellingson Motors 25 27	25 27	Hits and Misses 24 28	24 28
Carhart Lumber 21 31	21 31	Whirl Aways 22 30	22 30
Bob's Derby 16 1/2 35 1/2	16 1/2 35 1/2	Bowling Belles 17 35	17 35
Heritage Homes 13 29	13 29	Pin Pros 15 37	15 37
Mrs. J. Sanitary Service 11 1/2 40 1/2	11 1/2 40 1/2	Bubbling Belles 11 41	11 41
High Series: Rich Wurdinger, 235; Val Kienast, 227; Red Carr Impl., 1024; Red Carr Impl., 917		High Scores: Fran Nichols, 208; Judi Topps, 146; Lucky Strikers, 714; Lucky Strikers, 1984	
Saturday Mile Couples		Hits 'N Misses	
WON	LOST	WON	LOST
Jank-Jacobsen-Danberg 34 14	32 1/2 15 1/2	Kavanaugh Trucking 44 8	44 8
Soden-Krueger 30 18	30 18	Cunningham Well 30 22	30 22
Ellis-Nissen 29 19	29 19	Wilson Seed 28 1/2 23 1/2	28 1/2 23 1/2
Watson-Jorgensen-Stokan 27 21	27 21	Melodee Lanes 28 1/2 23 1/2	28 1/2 23 1/2
Danielson-Halley-Barnar 27 21	27 21	Rolling Pins 27 25	27 25
Koll-Witt 26 22	26 22	Ellingson Motors 27 25	27 25
Jaeger-Hoffman 26 22	26 22	Shrader-Allen Hatchery 27 25	27 25
Johnson-Miller-Freyer 20 28	20 28	Pais' Beauty Salon 26 30	26 30
Granquist-Wheeler-Hacall 20 28	20 28	M & S Oil 25 27	25 27
Jensen-Schwante 16 1/2 31 1/2	16 1/2 31 1/2	State National Farm Mgmt. 22 36	22 36
Lahn-Shafer 15 33	15 33	Black Knight 21 31	21 31
High Series: Dan Jaeger, 319; Linda Jankie, 222; Dan Jaeger, 620; Tami Granquist, 532; Danielson-Halley-Barnar, 702; Danielson-Halley-Barnar, 1994		The 6th Jug 14 1/2 37 1/2	14 1/2 37 1/2
Friday Night Couples		Monday Night Ladies	
WON	LOST	WON	LOST
Dall-Luff 40 1/2 7 1/2	37 1/2 20 1/2	Wayne Herald 38 14	38 14
Jankie-Deck 37 1/2 20 1/2	37 1/2 20 1/2	Ellis Barber 32 20	32 20
Baler-Haley-Meyer 25 23	25 23	Hervales 30 1/2 21 1/2	30 1/2 21 1/2
Tietz-Luff 25 23	25 23	Greenview Farms 28 1/2 23 1/2	28 1/2 23 1/2
Thompson-Weibe-Beckman 24 1/2 23 1/2	24 1/2 23 1/2	Danielson Drywall 27 1/2 24 1/2	27 1/2 24 1/2
Wood-Hansen 24 24	24 24	Gerald's Decorating 25 1/2 26 1/2	25 1/2 26 1/2
Carman-Strander-John 23 25	23 25	T.P. Lounge 25 1/2 26 1/2	25 1/2 26 1/2
Miliken-Mrsny-Lowe 20 28	20 28	Windmill Restaurant 24 28	24 28
Holdorf-Shurm-Jensen 20 28	20 28	Bob's Derby 23 29	23 29
Bull-Pickensough 20 28	20 28	Kiddle World 21 31	21 31
Wecker-Fredrickson 17 31	17 31	Kiddle World 21 31	21 31
Baler-Schroeder-Boyle 16 32	16 32	Carhart's 20 1/2 31 1/2	20 1/2 31 1/2
High Series: Dale Thompson, 215; Russ Beckman, 215; Sue Wood, 203; John Dall, 600; Jo Ostrander, 555; Dall-Luff, 744; Dall-Luff, 2049		El Toro 16 34	16 34
		High Scores: Kyle Rose, 206; Kyle Rose, 547; Carhart's, 891; Ellis Barber, 264	

State **National Bank & Trust Co.**
122 Main
Phone 375-1130

For After **Bowling League**
SNACKS & REFRESHMENTS
The El Toro Lounge & Package

NB

Wayne Grain & Feed
200 Logan
Phone 375-1322

Schmidt **WAYNE COLD STORAGE** **Pabst Blue Ribbon**
EAST HWY. 35 **Heineken** **HOME JUICE** **ORANGE JUICE** **PHONE 375-3085**

WAYNE MUNICIPAL AIRPORT
ALLEN ROBINSON
East Hwy. 35 Ph. 375-4444

- Flight Instruction
- Aircraft Rental
- Aircraft Maintenance
- Air Taxi Service

CLIP AND SAVE
If Snow is a Problem—Call Desh's
SNOW REMOVAL
of
• SIDEWALKS
• DRIVEWAYS
• SMALL PARKING LOTS
Call Now For Estimates 375-4859
DESH'S SNOW REMOVAL & Lawn Service
375-4359 Glenn Doeschler Wayne

Slides Shown at Serve All Club

Six members of the Serve All Extension Club met Nov. 21 in the home of Mrs. Gertrude Ulecht. Guests were Mrs. Harold Olson and Mrs. Max Gross.

The hostess showed slides of her tour this past summer of Switzerland, Austria and Italy.

Mrs. Norman Haglund called the meeting to order. Mrs. Lawrence Carlson, health leader, reported on the County Health Awareness meeting she attended recently. It was announced that the emphasis for next year's programs is "Food for Nutrition." A thank you note was read from the Wakefield Health Care Center.

Mrs. Norman Haglund won the hostess gift.

Next meeting will be a 6-o'clock potluck supper and Christmas party on Dec. 7 in the home of Mrs. Gertrude Ulecht. There will

be a gift exchange.

Even Dozen
Mrs. Elmer Bargholz was hostess for the Nov. 20 meeting of the Even Dozen Club. Nine members and two guests, Mrs. Ernest Geewe and Mrs. Willard Hammer, attended the meeting. The business meeting was conducted by Mrs. Clifford Baker. A thank you was read from Mrs. Elsie Tarnow.

Newly elected officers are Mrs. Verona Henschke, president; Mrs. Elsie Tarnow, vice president; Mrs. Emil Greve, secretary, and Mrs. Elmer Bargholz, treasurer.

Mrs. Clifford Baker was in charge of the entertainment. Winning prizes were Mrs. Elsie Tarnow, Mrs. Arnold Hammer, Mrs. Emil Greve and Mrs.

Ernest Geewe.
The club is planning a Christmas supper and party at 7 p.m. Dec. 12 at the Black Knight in Wayne. Next meeting will be a 12:30 p.m. potluck dinner and Christmas party on Dec. 18 in the home of Mrs. Elsie Tarnow.

Thanksgiving Dinner
The Arvid Samuelsons and Gaten were Thanksgiving dinner guests in the Walter Burhoop home, Bancroft.

Thanksgiving dinner guests in the Albert L. Nelson home were Mr. and Mrs. Leroy Giese and family and the Lindy Hansen family of Beemer, and the Emil Tarnows.

The Paul Stuarts, Ravenna, spent Nov. 21-25 in the Ed Krusemark home. Joining them for Thanksgiving dinner in the

Krusemark home were the Lonnie Nixon family, Laurel, the Ronnie Krusemark family, the Merle Krusemark family, Debbie Nelson, Gary Krusemark, Arnold Brudigam and the Raymond Brudigams.

The Bill Greve family, Roger Leonard, the Dennis Ronsples family of Pierce, the John Graves, the John Greve, Jr. family, the Henry Greve family; Mrs. Diana Greve and family and the Greg Simpsons were Thanksgiving dinner guests in the Eugene Bartels home.

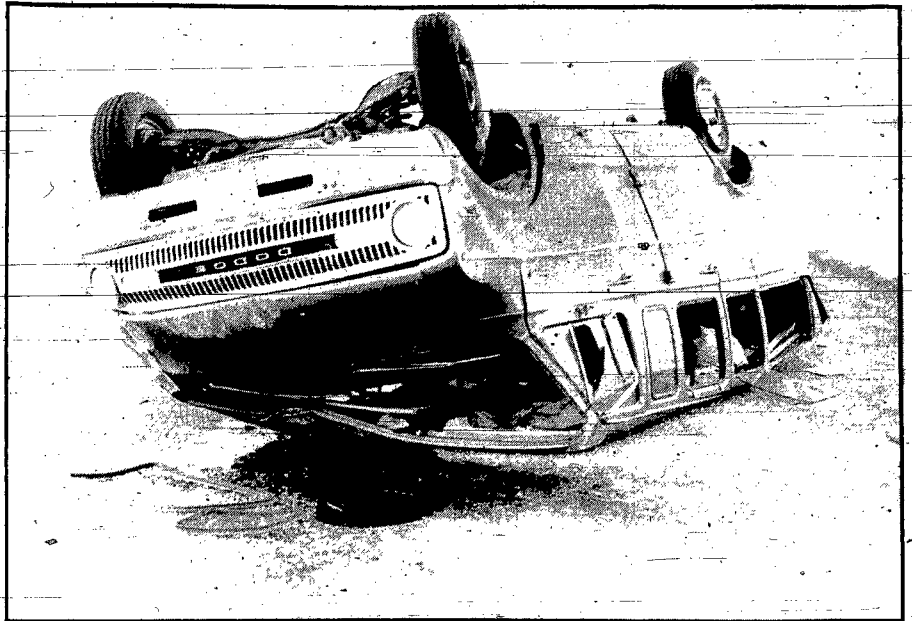
The Clifford Bakers and the Robert Pauls joined relatives in the Wayne Moes home, Osmond, for a related Thanksgiving dinner Nov. 25.

Mrs. Fred Utecht and the Eldon Barelmans joined relatives in the Dr. Dale Lund home, Fremont, for Thanksgiving dinner.

Thanksgiving dinner guests in the Paul Henschke home were Adolph Henschke, the Tom Henschkes, the Doug Paulsons and Jamie, and the Terry Henschkes and Jessica. Afternoon callers were Mrs. Clarence Kubik, Thurston, and Marilyn Kubik, Omaha.

Mrs. Wally Bresch, Puyallup, Wash., was a Nov. 19 supper guest in the Bill Greve home.

The Paul Stuarts, Ravenna, and the Ed Krusemarks were Nov. 25 dinner guests in the Ronnie Krusemark home.



Topsy, Turvy, But Minor Injuries

MINOR INJURIES resulted in an accident about 4:30 p.m. Thursday north of Wayne involving Marjorie D. Robertson, 38, Wayne. According to the Nebraska Highway Patrol, the van she was driving went out of control about 6 miles north of here on Nebraska 15 after another vehicle apparently forced her into the ditch. In

attempting to get back on the road, the van rolled 1 time, landing on its top. She was taken to Providence Medical Center by the PMC Rescue Unit and treated for possible minor neck and rib injuries. The van was considered a total loss.

Business & Professional DIRECTORY

Insurance

First National Agency

301 Main
Phone 375-2525

Dick Ditman, Manager

Plumbing

CREIGHTON

Plumbing — Heating & Electric Sewer Cleaning

Call 375-3061
If no answer call 375-3713

Services

Al's Air

Municipal Airport

Wayne Phone 375-4664

INSURANCE & REAL ESTATE

All Types of Insurance and Real Estate

PIA

KEITH JECH, C.L.U.

375-1429 316 Main Wayne

Real Estate

LAND SPECIALISTS

• We Sell Farms
• We Manage Farms
• We Are Experts in This Field

MIDWEST LAND CO.

Phone 375-3385
206 Main — Wayne, Nebr.

FARMERS NATIONAL CO.

4820 Dodge Omaha, Nebr.

Professional Farm Management Sales - Loan - Appraisals

Jerry Zimmer
Box 454 375-1176

Independent Agent

DEPENDABLE INSURANCE

FOR ALL YOUR NEEDS
Phone 375-2696

Dean C. Pierson

Agency

PIA

111 West 3rd Wayne

DALE STOLYENBERG

REAL ESTATE

Real Estate - Farm Sales Residential Sales Farm Management

220 West 7th — Wayne, Ne.
Phone 375-1262

MRSNY

SANITARY SERVICE

N.E. NEBRASKA MENTAL HEALTH SERVICE CENTER St. Paul's Lutheran Church Lounge, Wayne

1st & 3rd Thursday of Each Month
9:00 a.m. — 10:00 Noon
1:30 p.m. — 4:00 p.m.

Donliver & Arlen Peterson
For Appointment
Home-375-3180 • Office 375-2899

Office Supplies

YOUR ONE-STOP OFFICE SUPPLY STORE

• Furniture • and more
• Machines • and more

WAYNE BOOK STORE & Office Supply

375-3295 219 Main

WAYNE OFFICIALS COUNTY

Assessor: Doris Stipp 375-1979
Clerk: Oregretta Morris 375-2288
Assoc. Judge: Luverna Hilton 375-1622
Sheriff: Don Welble 375-1911
Deputy:

S.C. Thompson 375-1389
Supt.: Loren Park 375-1777

Treasurer:
Leon Meyer 375-3885
Clerk of District Court:
Joann Ostrander 375-2260

Agricultural Agent:
Don Spitze 375-3310
Assistance Director:
Miss Thelma Moeller 375-2715

Attorney:
Budd Bornhoff 375-2311
Veterans Service Officer:
Wayne Denkiau 375-2764
Commissioners:
Dist. 1 Merlin Belermann
Dist. 2 Kenneth Eddie
Dist. 3 Jerry Pospishil
District Probation Officers:
Herbert Hansen 375-3433
Merlin Wright 375-2516

WAYNE'S BODY SHOP

Complete

Body and Fender Repair

ALL MAKES AND MODELS
Painting — Glass Installation

223 S. Main Ph. 375-1966

Pharmacists

Dick Keldel, R.P.
375-1142
Cheryl Hall, R.P.
375-3610
John Matson, R.P.
375-3766

SAV-MOR DRUG

Phone 375-1444

CITY

Wayne Marsh 375-2797
CITY ADMINISTRATOR —
Darral Brewhington 375-1733
City Clerk-Treasurer —
Bruce Mordhorst 375-1733
City Attorney —
Olds, Swarts & Enz 375-3985
Councilmen —
Leon Hansen 375-1242
Carolyn Filler 375-1510
Larry Johnson 375-2864
Clifton Ginn 375-1428
Darral Fuelberth 375-3205
Keith Mosley 375-1735
Sam Hepburn 375-4759
Darral Heier 375-1538
Wayne Municipal Airport —
Allen Robinson, Mgr. 375-4664

RADIATORS REPAIRED

We do the job right!

M & S RADIATOR

419 Main
Phone 375-2811

BENTHACK CLINIC

213 W. 2nd Street
Phone 375-2588
Wayne, Nebr.

WAYNE CARE CENTRE

Where Caring Makes the Difference

918 Main Phone 375-1922

EMERGENCY 911

POLICE 375-2626

FIRE CALL 375-1122

HOSPITAL 375-3900

SPACE FOR RENT

WINSIDE NEWS / Mrs. Andrew Mann 286-4461

Winside Students Entertain Seniors

Monday, Dec. 10: Junior high wrestling, Wakefield at Winside, 3 p.m.; board meeting, 7:30 p.m.

Thanksgiving dinner guests in the home of Mrs. Anna Wylie were Mrs. Clarence Wylie and family of Wichita, Kan., the Don Wylie family, Norfolk, the Lowell Bakers, and Lori, Kingsley, Iowa; the Doug Baker family, Kingsley, Iowa, the Don Longnecker, the Stanley Sten-

walls and Scott, the Kevin Clevelands and Jeremy, Mr. and Mrs. Bob Bowers and the Rev. Janet Baerstein.

Mrs. Ken Graves and Mrs. Jerry Landanger, Omaha, visited in the Roy Landanger home Tuesday.

The Marlin Landanger family, Newman Grove, visited Nov. 25 in the Roy Landanger home.

The Alvin Bargstadts, the Dave Millers and the Myron Miller

family had Thanksgiving dinner Nov. 23 in the Roger Bargstad home, Omaha.

Thanksgiving dinner guests Nov. 23 in the Jack Brockman home were the Otto Schlueters, Norfolk, the Randall Schlueters and daughters, Humphrey, the Herman Brockmans, Wayne, and Charles Brockman.

Dale Bowder, Lincoln, spent the Thanksgiving vacation with the Howard Iversons and Lester

Grubbs, Randall Miller and a friend, Bill Lu Allen of San Diego, Calif., spent the Thanksgiving holiday visiting Miller's parents, the Dale Millers, and other relatives. They returned to California last Monday. Millers and their guests were post-Thanksgiving dinner guests in the Henry Herold home, Lincoln.

The Ivan Diedrichsens entertained at a post-Thanksgiving dinner Nov. 24 for relatives from Malvern and Glenwood, Iowa; Wayne, Norfolk, Winside and Os-

The students presented the senior citizens with passes to attend a matinee held Friday afternoon at the elementary school.

Senior Citizens played pitch for entertainment. Thank you cards were read from Mrs. Ella Damme and the Grace Swanson family.

Next meeting will be Dec. 4 at 12:30 p.m. at the Stop Inn.

Bridge Club
Tuesday Bridge Club met last week in the George Farran home. Receiving prizes were Don Wacker, high, Charles Jackson, low, and Mrs. Don Wacker traveling.

Clarence Pfeiffers will host the club Dec. 11.

Community Club
The Winside Community Club met Nov. 26 at Lee and Rosie's for supper. Afterward the group traveled to the Stop Inn for the regular business meeting.

Members of the Old Settlers committee met with the Community Club and decided to hold the annual Old Settlers on Aug. 25-26, 1980.

The Community Club plans to meet Dec. 17 for supper at Will's Cafe. Afterward they will sack candy for Santa's visit.

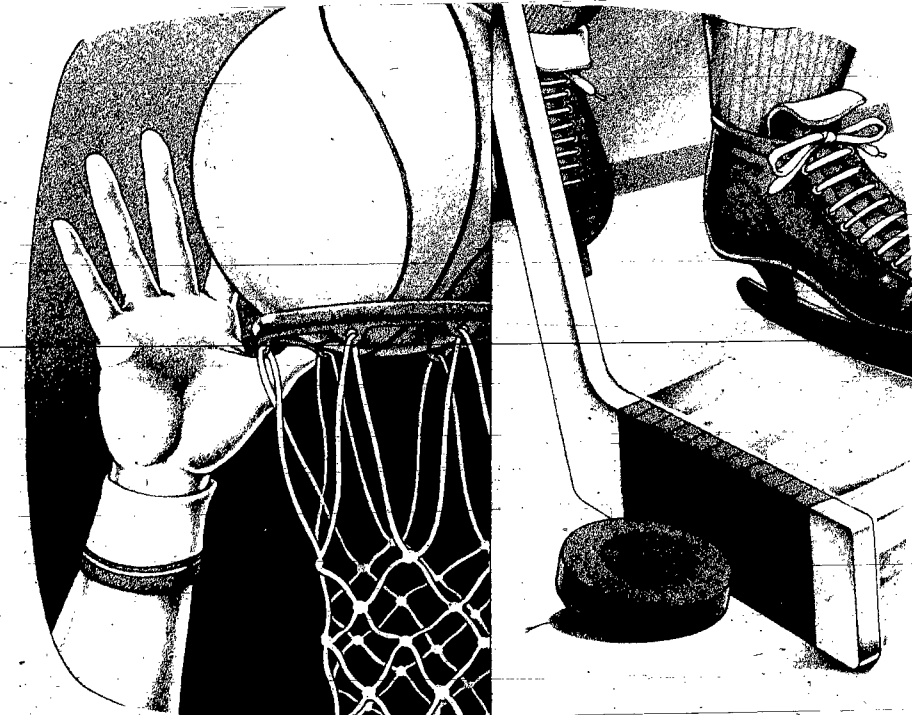
Santa Claus will visit youngsters of the Winside community at the elementary school on Dec. 21 from 10:30 a.m. to 1:30 p.m.

Birthday Supper
Mrs. Paul Dangberg entertained at a party Wednesday for the seventh birthday of her granddaughter, Julie Dangberg.

Guests were Julie's classmates and Mrs. Mildred Dangberg and Lorree, Mrs. Lillie Lippitt, Mrs. Edna Dangberg, Mrs. Jack Luff, Mrs. Emil Dangberg, Mrs. Brad Dangberg, and Mrs. Loren Dunklau of Elkhorn.

Games were played and refreshments served.

Social Calendar
Monday, Dec. 3: Music Boosters general meeting, music room.
Tuesday, Dec. 4: American Legion: Senior Citizens; Tops Club.
Wednesday, Dec. 5: Winside Federated Woman's Club; St. Paul's LWML; St. Paul's Walther League.
Thursday, Dec. 6: Coterie Club; Brownie Troop 167.
School Calendar
Tuesday, Dec. 4: Junior high wrestling, Winside at Plainview, 6:30 p.m.; college planning meeting, room 205, 7 p.m.
Thursday, Dec. 6: Boys basketball, Winside at Allen, 6:30 p.m.
Friday, Dec. 7: Kindergarten through eighth grade Christmas music program, elementary multi-purpose room, 7:30 p.m.
Saturday, Dec. 8: Wayne State wrestling journey.



OUR GOAL IS TO BRING YOU SUPER SPORTS ENTERTAINMENT.

WTBS. It's the spectacular slam-dunk action of NBA basketball, featuring the exciting Atlanta Hawks. This season you'll be able to view 40 live games.

But it's more than just basketball. We'll bring you the fast and furious action of NHL Hockey, spotlighting the tough and talented Atlanta Flames. Hockey at its very best.



featuring 25 thrilling games. In fact, you can tune in to all kinds of super sports entertainment the year round on WTBS — over 200 live events each year. So subscribe today. You'll discover what millions of people all over the country have already found out for themselves. WTBS is the Super Station. And it's all yours through Cable TV.

WTBS. THE SUPER STATION FOR SPORTS ON CABLE TV.

★ SPACE AGE TELEVISION COMES TO WAYNE ★

Take advantage of our LIMITED-TIME Installation offer: \$5.00 for a one-outlet installation, and the remainder of the month's charge free! CALL 375-1120 NOW!!

WAYNE CABLEVISION

120 W. 3rd St. 375-1120



Guess Who's Right Behind Thanksgiving?

SANTA CLAUS, OF COURSE!

THAT'S WHY THE BIG RUSH!

We think the people of Wayne and the thousands of other customers who shop in our area, are wise enough to realize the many advantages they'll enjoy by getting their Christmas shopping started right now.

Gift selections in all your favorite stores are complete! What a delight to find the very gifts you had in mind — in the size — the color, for everyone on your list!

Avoid the big crowds — shop at your leisure — take your time to pick and choose. You'll get prompt, courteous, personal service. Salespeople, too, are free of those last-minute pressures experienced during the Christmas rush!

All store services are at their best. Wrapping is fast and efficient. Deliveries are prompt. Your purchases will be in your home in ample time for you to inspect them — and to gift-wrap them to your taste!

AND AS THAT WONDERFUL SEASON DRAWS NEAR, YOU'LL HAVE THE TIME TO ENJOY IT MORE — THAT'S WHY THE BIG RUSH!

The Diamond Center
Merchant Oil Co.
Griess Rexall
Wayne Co. Public Power Dist.
Chrysler Center
Western Auto
Shrader-Allen Hatchery
Doescher Appliance
Wayne Care Centre
McDonald's
Wayne Federal Savings & Loan
Wayne Auto Parts
Gibson's Discount Center
Carhart Lumber Co.
Rudy's Pro Shop
WAYNE COUNTRY CLUB
Charles Refrig. & Appl. Service
M & S Oil Co.

State National Bank & Trust Co.
Melodee Lanes
First National Bank
Coast to Coast
Koplin Auto Supply
Ellingson Motors
Wittig's Food Center
Johnson's Frozen Foods
Eldon's Standard Service & Car Wash
Morris Machine Shop
Arnie's — Ford-Mercury
The Wayne Herald
Lil' Duffer Burger Barn
El Toro Package Store & Lounge
King's Carpets
Wayne Greenhouse
Wiltse Mortuary
WAYNE — WINSIDE — LAUREL

Fredrickson's Oil Co.
Black Knight Bar
Karel's
FURNITURE — WATER SYSTEMS
State National Farm Mgt. Co.
Rich's Jack & Jill
YOUR HOME-OWNED SUPERMARKET
Surber's
CLOTHING FOR MEN & WOMEN
Discount Furniture
Pat's Beauty Salon
Barner's Lawn Center
Wayne Book Store
Mike Perry Chev-Olds
Red Carr Implement
Sherry Bros., Inc.
Pierson Insurance Agency
Sav-Mor Drug
ACROSS FROM WEC COLLEGE

Want Ads

CARROLL NEWS

Mrs. Ed Fork
585-4827

All Faith Youth Going Caroling

All Faith Youth of Carroll are planning to go Christmas caroling on Monday evening, Dec. 17. The group met last Monday evening at the Methodist Church. Becky Otte had devotions. Serving were Pam and Tammy Ulrich and Mrs. Randy Schluns. Jim Harmer conducted the business meeting and Jeff Schaffer reported on the last meeting.

The club met in the home of Mrs. Kenneth Eddie Wednesday. Mrs. Kearney Lackas conducted the business meeting and Mrs. Marvin Haselhorst reported on the last meeting. Roll call was answered with members telling what they did Thanksgiving Day. Cards were played and winners were Mrs. Don Winklebauer and Mrs. Kearney Lackas. Mrs. Gerald Hale will be the Jan. 17 hostess.

Lincoln, Gordon Cook and Catherine Cook of Omaha, Mr. and Mrs. Gilmore Sals and Roger, Ron Otte and Becky, and Craig and Rod Cook. Warren Cook arrived home from Coppell, Texas on Nov. 28 to spend a week visiting his parents, the Arthur Cooks.

Fourth Birthday
Brad Erdmann was honored for his fourth birthday Nov. 1. Dinner guests in the home of his parents, Mr. and Mrs. Brian Erdmann, were the Harold Erdmanns and Keith of Crofton, Mr. and Mrs. Carroll Douglas, Becky and Cindy, and Mike Hoffart, all of Madison, Vern Gehner of Norfolk, and the Alvin Gehners, Collette and Renee, and the Randy Holdorf family, all of Wayne.

The Lester Kirkwoods, Salem, Ore.; Mrs. Christine Cook and Ted Winterstein were evening dinner guests Nov. 15 in the Harry Holdorf home. The John Horner family, Lees Summit, Mo.; Jim Stephens, Fremont, and the Darryl Fields; Wisner, were Thanksgiving weekend guests of their parents, Mr. and Mrs. Leo Stephens. The group also visited their grandmother, Mrs. Carrie Stephens of Carroll. Thanksgiving dinner guests in the Lem Jones home included Paula Hoeman of Lincoln, the Clarence Hoemans and Perry, and the Scott Decks, all of Hoskins. Corinne George of Winside, the Erwin Morrises and Eddie, Mrs. Anna Mae Morris and the Randy Schluns family.

Mother Honored
A dinner in the Merlin Kenny home Nov. 18 honored the birthday of her mother, Mrs. J.C. Woods.

CONCORD NEWS

Mrs. Art Johnson — 584-2495

Guerns Home

Mr. and Mrs. Alvin Guern Sr. returned home Nov. 23 after spending a month visiting relatives in Chicago, Ill., Spirit Lake, Iowa and Maryland. Guerns spent Thanksgiving with the Melvin Baumgardners in Iowa.

Coming Events

Monday, Dec. 3: Three C's Home Extension Club Christmas party, Alice Erwin, 7:30 p.m.
Tuesday, Dec. 4: Evangelical Free Church WMS Christmas party, Mrs. Bob Dickey, Laurel, 7:30 p.m.
Wednesday, Dec. 5: Concord Womens Welfare Club Christmas luncheon, Mrs. Art Johnson, noon.

Linda Rewinkle, Chanute Air Force Base, Ill., spent the Thanksgiving weekend with her parents, the Marvin Rewinkles. The George Andersons spent Nov. 24-28 in Sidney, where they attended the golden wedding anniversary of the Arnold Westershoofs on Nov. 25. Arthur Johnson were birthday guests last Monday evening in the Leon Johnson home, honoring the host. The Jim Nelson family were Wednesday evening guests in the James Worderkemper home, Norfolk, honoring the host's birthday.

Social Neighbors
Social Neighbors Club is planning a no-host Christmas supper on Dec. 15, at 7 p.m. at the Belden Bank parlors. Husbands will be guests and there will be a gift exchange.

The Vernon Hansens, Lincoln, and the Kirk Hansens, Springfield, Mo., were visitors Wednesday in the Mrs. Anna Hansen home.

The Gary Oakeson family, Columbus, the Jack Rohde family, Randolph, and the Carl Janssens were Thanksgiving dinner guests in the Richard Janssen home. Oakesons spent the weekend with her parents, the Carl Janssens.

The Doug Hansens family, Omaha, were Nov. 24-25 guests in the Maurice Hansen home. The Gary Hansens, Verdigré, and the Clint Van Winkle family, Beatrice, were Thanksgiving weekend guests in the Martin Hansen home.

Peggy Bowers, Osmond, spent the Thanksgiving weekend with her parents, Mr. and Mrs. John Bowers.

Thanksgiving dinner guests in the Arthur Cook home included the Archie Underwoods, Craig and Scott, and Warren Sals, all of

LOW RATES for insurance for all needs. Check us out! Pierce County Farmers Mutual Insurance Co. Phone 582-3385. Plainview, or local agent, Merlin Frevert, Wayne. Phone 375-3609.

Real Estate

REAL ESTATE
THINKING OF SELLING YOUR HOME See Or Call Us **PROPERTY EXCHANGE**
112 Professional Building

WATERTOWN MONUMENT CO.
Buy Direct From The Factory and Save! Local Representative, Virgil Luhr Phone 375-2498

HOLT COUNTY
640 acres with 378 acres irrigated with 2 pivots, 262 acres native grass in NE and SW corners each with new automatic electric watering units, good quality irrigated land with drainage developed, excellent underground water, complete deluxe 16,000 bushel bin with full perforated drying floor. Owner is consolidating Holt County land, offering on a trade basis and has option on land he is acquiring. Priced to sell at \$450 per acre based on irrigated at \$875 and meadow at \$300 plus new bin, waterers and fence value. Other properties for sale are located in Brown Co. — 9 irrigated quarters; Nance Co. — 480 acres; and Madison Co. — 200 acres. Call or Write:

National Bank of Commerce, Trust and Savings Ass'n Farm Dept., Box 82408 Lincoln, NE 68501 (402) 472-4496 or at Norfolk, NE Edward Eggleston Holiday Plaza No 207 (402) 371-0065

CHRISTMAS TREES: Standing in full, choose and cut your own tree or we can do it for you. Open 9-5 weekends only. Fuchs Pines, south edge of Belden. n2218

LIGHT DUTY chain saw repair, tune-up and sharpening. Sherry Bros., West First, Wayne. 375-2082. s2711

Wanted

PIANOS WANTED: We pay cash. Write Milo Martin, Box 579, or phone 382-7061, Grand Island, Nebraska. n2913

Elderly VA Pensioners May Be Losing Out

A number of elderly Veterans Administration pensioners in Nebraska may be short changing themselves because they haven't reported all their 1978 unreimbursed medical expenses, the agency said recently. And they have only until Dec. 31 to advise VA of these expenses or lose forever pension money to which they are entitled. James C. Smith, director of the Veterans Administration Regional Office in Lincoln, said the pensioners are primarily veterans or their survivors who chose at the end of 1978 to remain under what is now called the "old" VA pension plan because it was to their advantage to do so. Their pension rates were frozen at the end of the year.

He said that a smaller group of pension recipients chose to switch to a more recent plan which offered higher rates to some pensioners, depending on individual circumstances. The law permits members of either group to advise VA by the end of 1978 of any previously unreported medical expenses they had during 1978. Smith explained that by taking these bills into account, the VA may increase the amount of pension the individual receives. The fact that approximately 15 percent of the 1.5 million veterans and survivors enrolled in the old pension plan have neglected to report all their paid medical expenses for last year was uncovered by a recent VA survey.

Tree Lighting Set

The annual Christmas Tree Lighting at Wayne State College will be held beginning a 7 p.m., Thursday, Dec. 6, in the Willow Bowl at WSC.

The event, designed to usher in the holiday season at WSC, is sponsored by the WSC Faculty Wives and Women's Club and the WSC Student Activities Board. The program will include a welcome message and Christmas carols sung by WSC residents hall residents and other participants. Free refreshments will be served in Berry Hall following the lighting. Santa is scheduled to attend the event, open free to the public.

HELP WANTED
Cocktail and food waitresses, dishwashers and busboys. Apply at Wagon Wheel Steakhouse. Laurel, NE.

HELP WANTED: Part time church secretary, First United Methodist Church, 6th and Main; Wayne. Apply 9-12 daily or contact Rev. Kenneth Edmonds, 375-2231. n2913

HELP WANTED: Do you enjoy talking on the phone? Why not get paid for it? Apply to Mrs. Babcock Monday, Dec. 3, 5-7 p.m. or Tuesday, Dec. 4, 10 a.m. to noon. Amber Inn, Wayne. Room 12. n2912

HELP WANTED: Waitresses and cooks, day time or night time work. Apply in person to Scott's Restaurant, 206 East 7th St., Wayne. n2911

HELP WANTED: Person to work in parts department; experience helpful but not necessary. Apply in person to Ken Hamer, Mike Perry Chevrolet. n2913

HELP WANTED: Immediate opening, full or part time L.P.N. Starting wages \$4.00 per hour; to be increased after 30 days. Apply at Wayne Care Centre, Wayne. n2613

Business Opp.

HAVE A HIGHLY profitable and beautiful Jean shop of your own. Featuring the latest in jeans, denim, tops and sportswear. \$15,500.00 includes beginning inventory, fixtures, training. Can be open within 15 days. For details call anytime for Mr. Correa at (501) 225-7458. d3

LEADS! LEADS! LEADS!

Unlimited leads and top commissions make our opening for sales representatives in the Medicare field a unique opportunity for sales representatives in the Medicare field a unique opportunity. Experience in sales not mandatory -- we furnish a complete sales training school plus on-the-job training!! For those of you experienced in sales, check us out -- ours is an established and respected firm which allows us to offer top commissions available in the field. For more information, call collect for Pat (402) 371-1758.

EXTRA \$\$\$ If you now have a full-time job and want to earn more money, you are the person we are looking for. American Republic Insurance Company needs one part-time representative in this area. Call Dennis Corby, (402) 393-7745, Monday through Friday, 8 a.m. to 12 noon for an interview. d312

For Sale

FOR SALE: Maternity clothes, size 16. Call 375-4655. d313

FOR SALE: Top 4-H and SSA show steer and heifer prospect. Simmental, Limousin, Maine-Anjou, and Cahaniana cross calves from Angus and Angus-Herford cows. Various colors, weights and prices. Phone (402) 372-2939, West Point, Nebraska. n2913

FOR SALE: Snow blower attachment for 1-40 John Deere garden tractor. Call 375-1740. n1911

For Rent

FOR RENT: Efficiency apartment available after Dec. 21 Call 375-1770. n2913

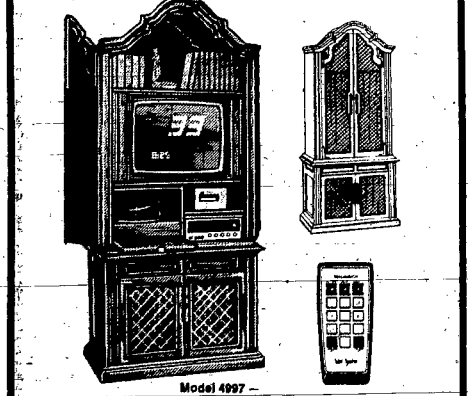
FOR RENT: Deluxe two bed-room apartment. Call 375-1918. n2911

The Broyhill Mfg. Co. of Wayne
IS HIRING PERMANENT EMPLOYEES FOR BOTH THE DAY AND NITE SHIFT.
Day Shift Starts at 7 a.m.
Nite Shift Starts at 3:30 p.m.
College Students Hired on a Part Time Basis.
APPLY AT
Broyhill Mfg. Co. Plant 375-4818
An Equal Opportunity Employer
Vacation; Paid Holidays; and Group Insurance Available

MAGNAVOX CHRISTMAS SPECIALS
Great Gifts
Great Savings

STAR SYSTEM COMPUTER COLOR 330 TOUCH-TUNE TV

...a 25% sharper, crisper, clearer picture than ever before possible!
Come & See This Beautiful **STEREO THEATRE** Now — At T&C Electronics



25" diagonal COLOR STEREO THEATRE
This exquisitely crafted Magnavox combines advanced video and audio electronics in a cabinet of timeless beauty. Touch-Tune at the set or by remote control and see a 25" diagonal-color picture that is 25% sharper, crisper, clearer than ever before possible. You'll even see the channel number and time flash on the screen. The stereo system includes a stereo FM/AM radio, automatic record changer, and a deluxe 3-way speaker system.

CHRISTMAS SHOP WAYNE

T&C ELECTRONICS
Tom & Cindy Schmitz
114 Main - Wayne - 375-4484

Special Notice

CUSTOM HAY GRINDING
Contact Gary Wiese Wisner, Neb. Phone 529-6634

WANT TO RENT-A-CAR?
See Us FIRST!
ARNIE'S
Open Evenings

KNOW THE SIGN OF COMPETENCE

111 West 2nd FOR SALE Wayne, Ne.
STATE-NATIONAL FARM MANAGEMENT REAL ESTATE
375-2990
★ Appraisals
★ Management ★ Sales
★ Farms ★ Farm
★ Residential ★ Residential
★ Commercial
SEE US TODAY!!

Save Where
NO MINIMUM DEPOSIT IS REQUIRED
Yes put your savings in one of our many different plans requiring no minimum deposit. The only savings plan that requires minimum deposit is our 6-Month Money Market.
• Savings Passbook Account [No Minimum Deposit] 5 1/2 %
• 90-Day Certificate [No Minimum Deposit] 5 3/4 %
• One Year Certificate [No Minimum Deposit] 6 1/2 %
• 30-Month Certificate [No Minimum Deposit] 6 %
• 4-Year Certificate [No Minimum Deposit] 7 1/2 %
• 4-Year Variable Ceiling Rate Certificate [No Minimum Deposit] 9.85 % (For December)
• 6-Year Certificate [No Minimum Deposit] 7 %
• 8-Year Certificate [No Minimum Deposit] 8 %
• 6-Month Money Market Certificate 11.02 %
Minimum Deposit \$1,000. Rate is in effect Thursday thru the following Wednesday.
- BONUS -
When you save with us you will receive a Sparkling Acrylic **CHRISTMAS ORNAMENT FREE** or at a reduced rate.
Our Savings Accounts are Insured up to \$40,000
ESLIC WAYNE FEDERAL
Savings and Loan
321 Main Street Phone 375-2042

LAUREL NEWS / Mrs. Sandra Hoffart 256-3563

Garden Club Meets

The Laurel Garden Club met Nov. 20 in the home of Mrs. Chris Roth. Members responded to roll call with events of the day. The 14 members spent the afternoon answering a garden quiz and discussing gardens. The club's Christmas party will be held at noon Dec. 18 at the Corner Cafe.

Party Slated
The VFW Auxiliary will hold its annual Christmas party on Dec. 5.

Members will meet at the Hillcrest Care Center for carolling at 6:30 p.m. and will proceed to the Glen Marions for a covered dish supper.

Meeting Planned
The Laurel Tuesday Club will meet at the Immanuel Lutheran Church Dec. 4 at 2 p.m. Serving will be Mrs. Elmer Hoffig, Mrs. Camilla Larson and Mrs. Gerald Leapley.

Annual Party
The Laurel Just-A-Club will hold its annual Christmas party at 11:30 a.m. today (Monday) at the Corner Cafe.

Social Calendar
Monday, Dec. 3: Eastern Star; Just-A-Club Christmas party, Corner Cafe, 11:30 a.m.; Boy Scouts, 7 p.m.
Tuesday, Dec. 4: City Council; Tuesday Club, Immanuel Lutheran Church, 2 p.m.; Brownies, high school art room, 3:15 p.m.; Creative Crafts Club, 7:30 p.m.
Wednesday, Dec. 5: Wednes-

Human Values Forum Topic

The second Nebraska Forum on Human Values program will be presented at the Nelhardt Center in Bancroft, a branch museum of the Nebraska State Historical Society at 7 p.m. Thursday.

Speaker will be Roger L. Shaffer, instructor of political science at Northeast Technical College, Norfolk. The topic will be "Role of the Handicapped in Society." Shaffer will give new insights, awareness and an understanding on the timely topic.

The series of four forum programs is sponsored by the John G. Neihardt Foundation. It is being co-sponsored by a grant from the Nebraska Committee for the Humanities. The public is cordially invited to attend. There is no admission charge.

day Pitch Club.

School Calendar
Monday, Dec. 3: Junior high music concert, 8 p.m.
Tuesday, Dec. 4: Home Economics Club.
Thursday, Dec. 6: Girls basketball, Crofton at Laurel, 6:30 p.m.

Thanksgiving guests in the Chris Roth home were the Al Roths, Coleridge, and the Kent Gades, Griswold, Iowa.

HOSKINS NEWS / Mrs. Hilda Thomas 565-4567

Hoskins Students Giving Program

Students of the Hoskins Public School will present a Christmas program Monday evening, Dec. 10. The public is invited to attend the 7:30 p.m. program. Refreshments will be served.

Garden Club
The Town and Country Garden Club met in the home of Mrs. Ezra Jochens recently for a 2 o'clock dessert luncheon. President Mrs. E.C. Fenske opened the meeting with a poem, entitled "International." For roll call, members told what they would like to do just once. Mrs. Emil Gutzman read the secretary and treasurer's reports.

Newly elected officers for 1980 are Mrs. Arnold Wittler, president; Mrs. George Langenberg Sr., vice president, and Mrs. Mary Kollath, secretary-treasurer. Members drew months for entertaining.

The hostess gave the comprehensive study on North Carolina Mrs. Arthur Behmer gave the lesson on citrus fruits and presented each member with fruit. Mrs. Arnold Wittler will be hostess for the next meeting, on Dec. 18 at 1:30 p.m. There will be a Christmas gift exchange.

Brownies, Scouts
Nine members of Brownie Troop 201 and Junior Girl Scout Troop 202 and leaders Mrs. Richard Behmer and Mrs. Jim Spiedel met last Monday afternoon at the fire hall.

READ AND USE WAYNE HERALD WANT ADS

A vacation is usually viewed as a relaxing time for most, but for the 130 students and non-students who participate annually in Wayne State College's International Education Programs, vacations also have proved to be educational.

WSC offers four European study trips annually in England, Scotland, Germany, Spain and Scandinavia, during June, July and August.

THE BASIC cost for the England-Scotland, Scandinavia, Germany and Spain trips is about \$1,390 each. Rates include round-trip airfare from Chicago,

most meals, lodging, most entrance fees to historical and cultural sites, lectures and tours and domestic travel in Europe on coaches, boats, trains and airplanes.

Though the programs provide enjoyable tours, for many, education is the major objective. The trips, worth up to three graduate credits or up to six undergraduate credits, include class sessions in Europe and tours to any cultural and historical sites. Participants may audit classes and lectures for no credit; basic program costs include tuition and program fees.

EACH PROGRAM lasts about three and one-half weeks, but participants are allowed to remain in Europe for up to 45 days. WSC International Education

Director Charles Kay said the experience gained through the trip is invaluable.

"The exposure that our participants receive to other cultures is very educational," he said. "To be exposed to another culture where language, customs and environments are totally different from one's own is not only mind-stimulating, but also beneficial to a student's education."

Scandinavia — June 16 - July 10
The Scandinavia program begins in Bergen, Norway, for a 3 day stop, with an opportunity to visit historical sites. Oslo is the next stop, for two days, followed by a 12 day stop at Herning, Denmark, where participants will have the opportunity to discuss such topics as NATO, foreign policies, education, industry, churches and theatres, Scandina-

vian literature, music and arts. Copenhagen will be the next stop, with five days free time allowed for sight-seeing.

England-Scotland — June 25 - July 23

The British Institute provides an excellent opportunity to examine the history and culture of Great Britain. The program begins in Edinburgh, the capitol of Scotland. Sites such as the Royal Palace at Holyrood will also be visited. A lecture series on modern Scotland is planned for the seven-day Scotland visit. Another two days will be spent in York, followed by a four- to five-day tour with free travel.

The core of the England-Scotland visit is 14 days in London. Visits are scheduled to numerous places, castles, courts, museums and churches, along

with ample free time. Lectures will be given by several British government leaders.

Northern Spain — June 25 - July 23

This program is divided into two parts — the first a Grand Tour beginning with Madrid, continuing to the Northern part of Spain. Visits to Burgos, Santander, Covadonga, Oviedo, Santiago, Orense, Zamora, Salamanca and two nights in Porto, Portugal, are included in the 1980 program. This tour is followed by a 15-day stay in Valencia where lectures on Spanish history and civilization are planned, along with several tours.

The courses offered for the Spain tour accommodate those with little or no Spanish. Germany — June 16 - July 10
A special feature of the Ger-

man trip this year will be attendance at the world famous Passion Play in Oberammergau, Germany. Although this trip is already filled, there is a possibility some openings may occur. In addition to Oberammergau, participants will spend the majority of their time in and around Bingen, located on the Rhine River. Studies will normally be held between 9 a.m. and 1:30 p.m., with the remainder of the day allowed as free time: Visits to Trier, St. Goar, Frankfurt, Heidelberg, Mainz, Rudesheim, a vineyard, and a cruise on the Rhine are also planned. A 4-day trip to southern Germany is also scheduled.

For information on the WSC travel-study programs, contact Charles Kay, director of International Studies, at 402 375 2200.

It's The Diamond Center's **1st BIRTHDAY**

We're celebrating our 1st Year in business and just to show our appreciation for your friendship and trust — we are having a week of savings for you. Just in time so you can save on all your Christmas gifts.


It's not too soon!

FREE DRAWING
Each Day (Dec. 4-11)
for a FREE PRIZE

SERVING COFFEE & COOKIES EACH DAY

DAILY SPECIALS

ALL WEEK - EACH DAY DEC. 4-11	SELECT GROUP OF UNMOUNTED DIAMONDS & 14 KARAT GOLD NECK CHAINS, BRACELETS & CHARMS	20% off
Tuesday DECEMBER 4	MEN'S STONE RINGS & LADIES STONE RINGS	20% off
Thursday DECEMBER 6	MEN'S & LADIES DIAMOND RINGS — LADIES DIAMOND and COLORED STONE RINGS	20% off
Saturday & Sunday DECEMBER 8 & 9	ALL ENGAGEMENT RINGS & WEDDING BANDS	20% off



CHRISTMAS SHOP WAYNE

Be Sure to Register for Our FREE "Winter Wonderland Gift."

A BEAUTIFUL \$750 DIAMOND DINNER RING



The Diamond Center

THE DIAMOND CENTER

211 Main Wayne 375-1804

You Are Invited to Celebrate
At Taco del Sol's

FREE
All Small Drinks
Courtesy of Pepsi-Cola

Grand Opening

This
Monday, Tuesday & Wednesday

Dec. 3-4-5

Buy One **DINNER**
At Regular Price

and the
Second One is **1/2 Price**



FREE CACTUS PLANTS
For the First 50 Ladies Each Day.



TACO del SOL

112 East Second at the Mineshaft Mall
Wayne — 375-4347

Don't Miss This Big Event!!